

ADD

Francesco Rota | 2014



ADD

Francesco Rota | 2014

Three letters and creativity takes shape. It arranges, detaches, changes and has fun. It is the ADD seating system, which elegantly meets the needs of contemporary work environments and space sharing. It is also an international award-winning success. Comfortable and versatile, the basic seating represents the first syllable of a language that speaks to different worlds. Two furniture elements can create a sofa. In a line, internal and external backrests join and separate tiny communities, with small tables and accessories for tablets and notebooks included in the composition. Countless combinations, a circle that encompasses the extremities of a meeting.



ADD

Francesco Rota | 2014



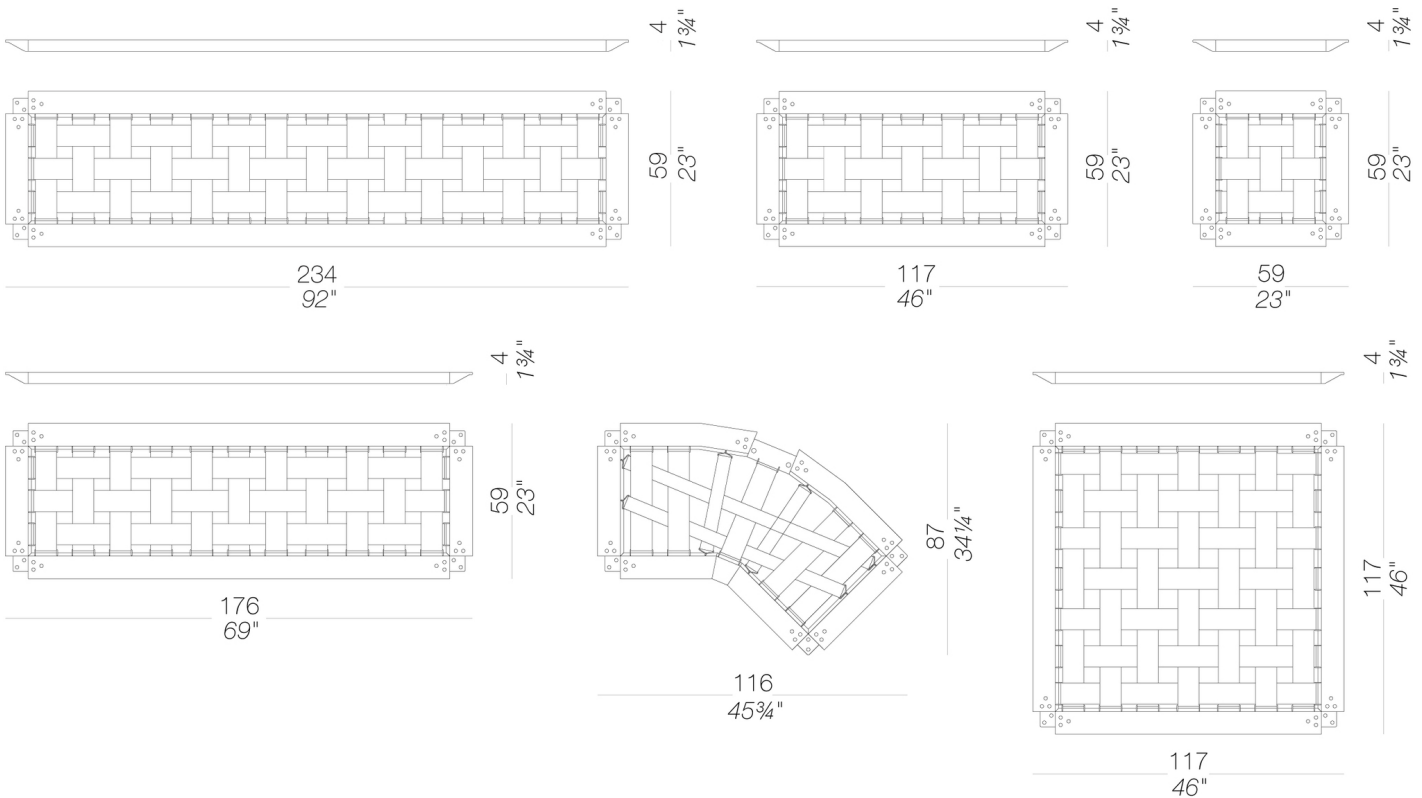
Modular seating system with powder coated die-cast aluminium frame and webbed elastic support. Backrests and accessories can be fixed to the frame in several positions by using existing holes. Two types of die-cast aluminium legs, one for corners and another to connect frames for larger configurations. Each leg type is available in two heights. Cushions and backrest in moulded fire-retardant foam with polyester fiber upholstered with removable fabric, soft leather or eco-leather. ADD is complemented by several accessories in HPL Fenix® 10 mm.: tops, trays, magazine racks, box for sockets, revolving (90°) tablet case in black anodized aluminium. All metal parts are powder coated.

TEST EN 1728:2012 AC:2013 6.17 - EN 16139:2013 - L2 extreme
TEST 1 IM - Divina, Remix, Steelcut

legs



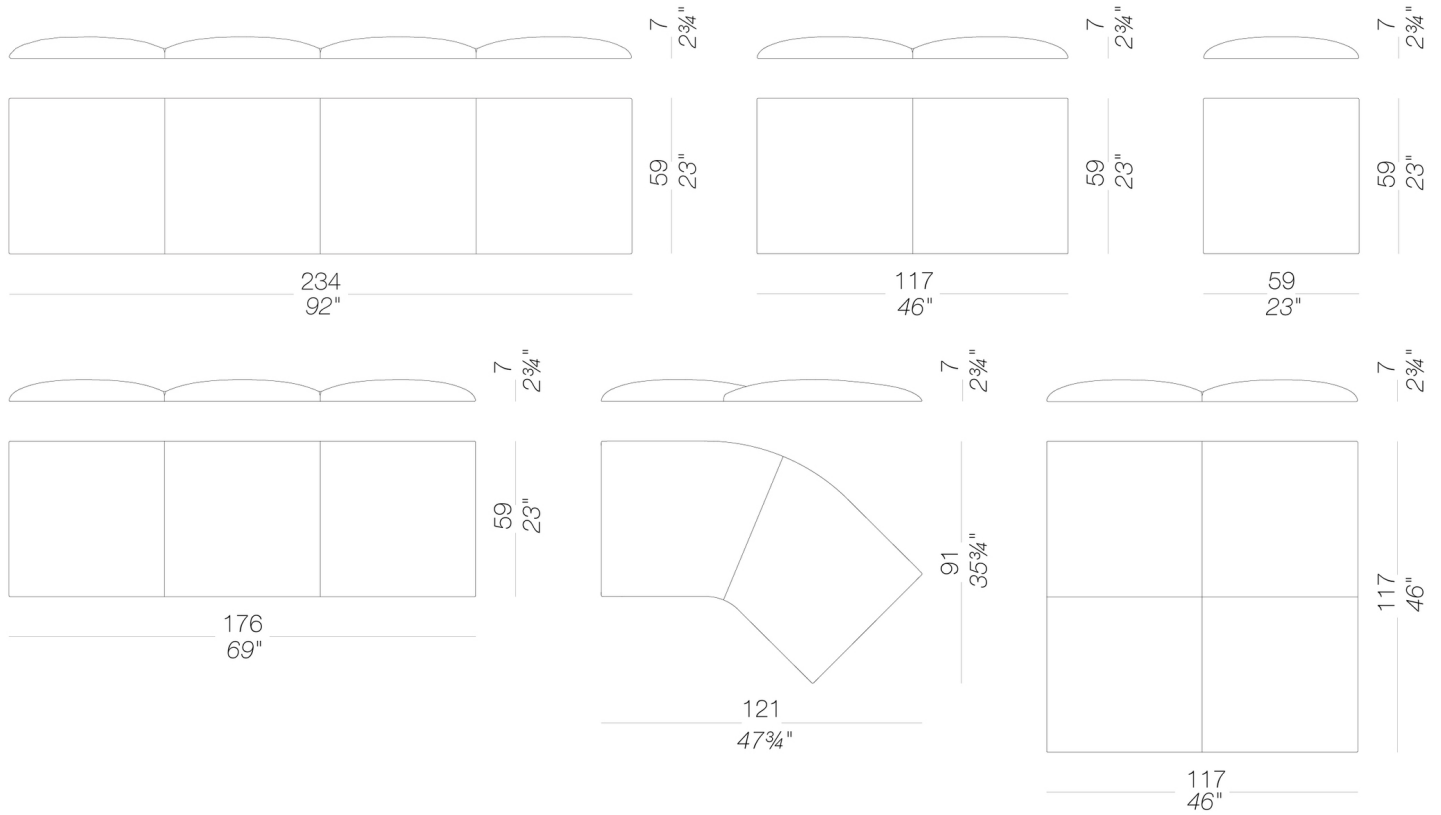
seat frames



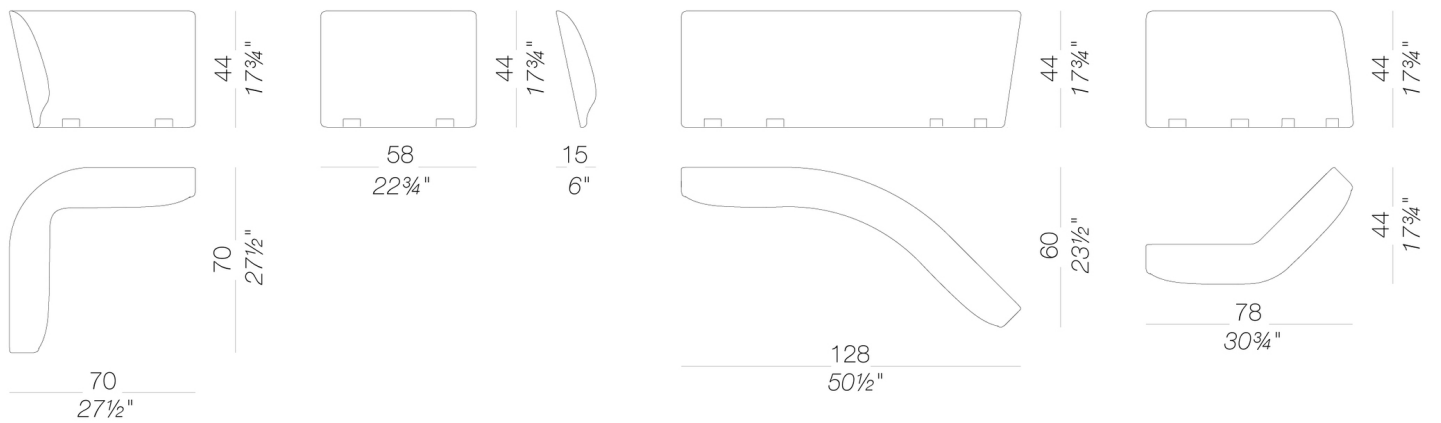
ADD

Francesco Rota | 2014

cushions



backs



ADD

Francesco Rota | 2014

table frames

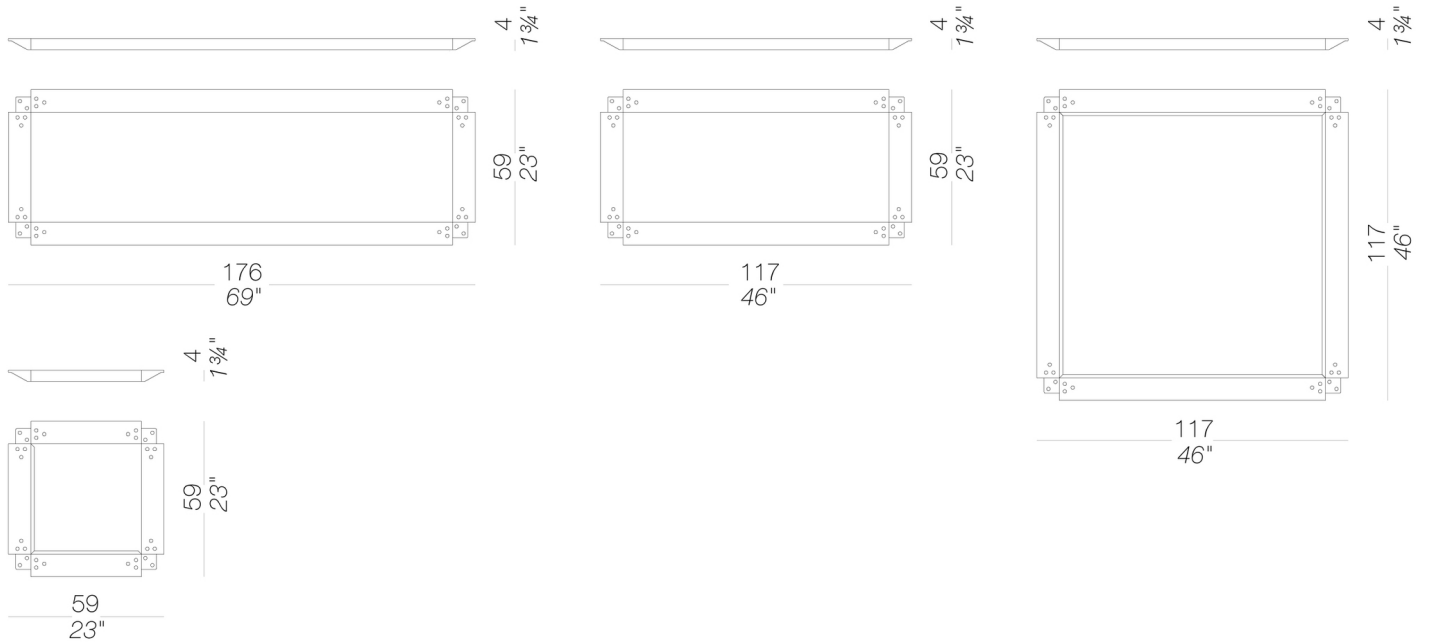
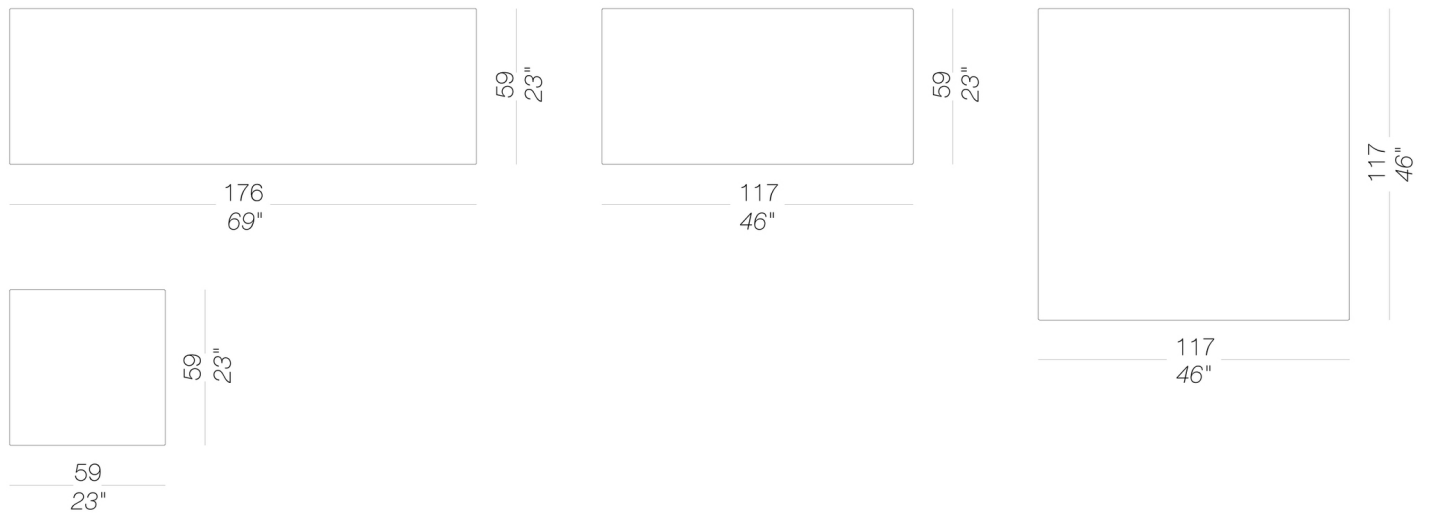
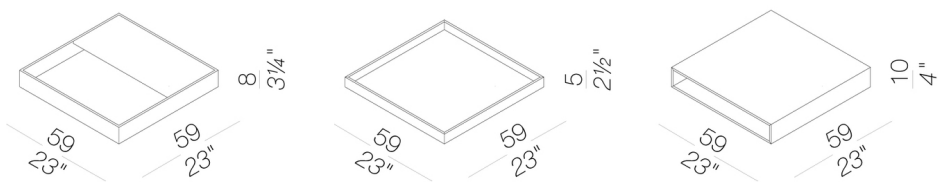


table tops



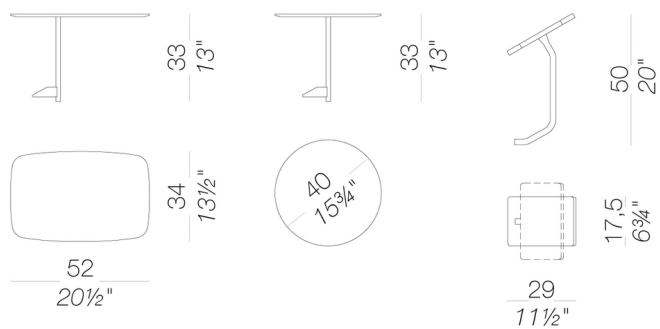
accessories



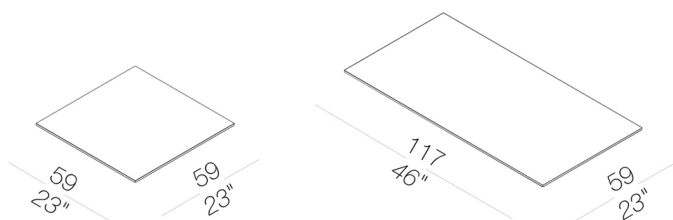
ADD

Francesco Rota | 2014

high tables and tablet support



low tables



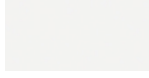
ADD

Francesco Rota | 2014

frame

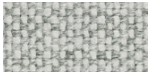


powder coating
black
1 Colors



powder coating
white
1 Colors

upholstery



fabric
Hallingdal 65
47 Colors



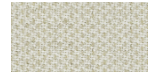
fabric
Canvas 2
40 Colors



fabric
Steelcut Trio 3
48 Colors



fabric
Remix 2
24 Colors



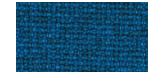
fabric
Clara 2
24 Colors



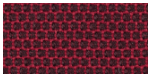
fabric
Divina MD
24 Colors



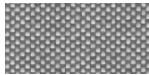
fabric
Divina Melange 2
24 Colors



fabric
Medley
37 Colors



fabric
Swing
24 Colors



fabric
Maya
43 Colors



fabric
Jet
44 Colors



fabric
Laser J Flash
24 Colors



fabric
Fiord
24 Colors



fabric
Tonica 2
39 Colors



soft-leather
soft-leather
7 Colors



ecoleather
GRIMM FR
24 Colors

top



HPL 10 mm
HPL fenix
2 Colors

consult the portfolio for the range of colors, fabrics, eco-leather, soft-leather.

use and maintenance instructions

Clean all parts in wood, leather, fabric and metal with a damp cloth or a diluted neutral cleaner. Do not use cleaners with alcohol, bleach, solvent or abrasive products. Any liquid spilt on the product must be wiped up immediately. When lifting or moving the product, hold it on the structure and not under the seat. The product should not be subjected to unbalanced weights, as it is designed for a proper rest on the foothold (on four legs or on the base). Our company relieves from any responsibility in case of damage caused to fragile floors. Avoid any improper use of the product: do not step on the product, on the footrest or on the armrests. Avoid any movements that could compromise the proper functionality of the product or the safety of the users. Wood and leather, being natural materials, could be easily damaged. Small impurities or imperfections are within quality standard range. Do not expose the product to weather conditions or atmospheric agents, nor to heat sources over 40°C. Also products for outdoor use could be afflicted by atmospheric agents. The product could undergo possible exterior changes due to particular exposure to heat, humidity and saltiness. An appropriate and frequent maintenance and cleaning of the product enhances its durability. The product could change colour and shade, if exposed to direct sunlight. Maintenance has to be carried out by experienced staff. Dispose of the package only after assembling the product, in order to avoid the loss of ironmongery and components. Once the product has been dismantled, the product itself or its components must be given to the public garbage disposal system, according to the legislation in force.