



Anfora, 879/T
tavolo \ table

Dall'aspetto scultoreo, il tavolo Anfora individua il proprio tratto distintivo nell'iconica base la cui forma, ispirata all'antico vaso greco, ne determina il nome. Proposta dall'estetica ricca, Anfora abbina alla base in marmo un sottile piano in noce Canaletto o vetro.

From the sculptural aspect, the Anfora table identifies its distinctive feature in the iconic base whose shape, inspired by the ancient Greek vase, is named after. With its rich aesthetics, Anfora combines to its marble base a thin top in Canaletto walnut or glass.

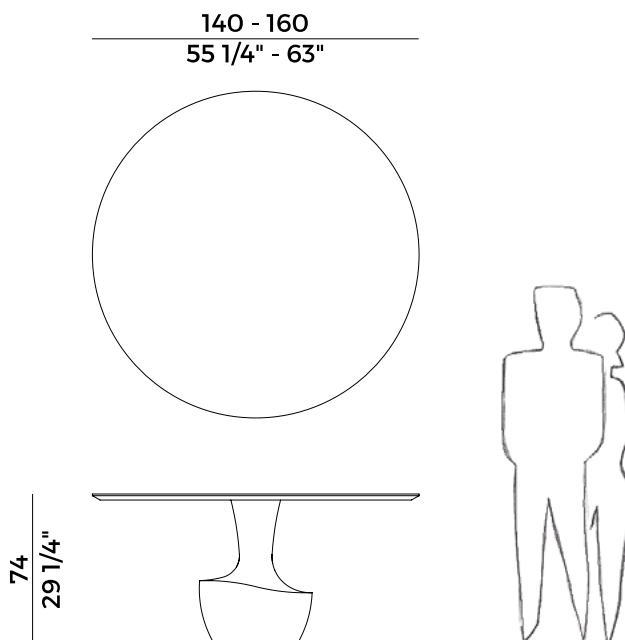
Informazioni tecniche \ *Technical information*

Descrizione tecnica \ *Technical description*

Tavolo tondo in due dimensioni con base in marmo e piano in vetro o in legno noce Canaletto. Finiture di collezione.

Round table in two sizes with marble base and glass or Canaletto walnut top. Materials as per collection.

Dimensioni \ *Dimensions*



Imballaggi \ *Packaging*



PACKAGING - Ø 140

2 box = m³ 0.66

gross weight wood - Kg 285

gross weight glass - Kg 300



PACKAGING - Ø 160

2 box = m³ 0.72

gross weight wood - Kg 295

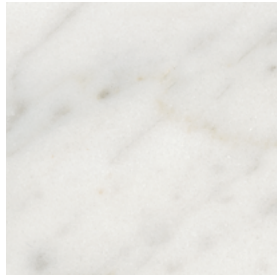
gross weight glass - Kg 310

Finiture \ *Finishes*

Finiture base \

Base finishes

Marmo \ *Marble*



Bianco Carrara Opaco \
Matt Carrara White

Finiture piano \

Top finishes

Vetro, Noce Canaletto \ *Glass, Canaletto Walnut*



Vetro Bronzo \
Bronzed Glass



Noce Canaletto Opaco
Matt Canaletto Walnut



Anfora, 879/T
tavolo \ table

Dall'aspetto scultoreo, il tavolo Anfora individua il proprio tratto distintivo nell'iconica base la cui forma, ispirata all'antico vaso greco, ne determina il nome. Proposta dall'estetica ricca, Anfora abbina alla base in quarzo resinato un sottile piano in vetro bronzo o marmo.

From the sculptural aspect, the Anfora table identifies its distinctive feature in the iconic base whose shape, inspired by the ancient Greek vase, is named after. With its rich aesthetics, Anfora combines to its resinated quartz base a thin top in bronzed glass or marble.

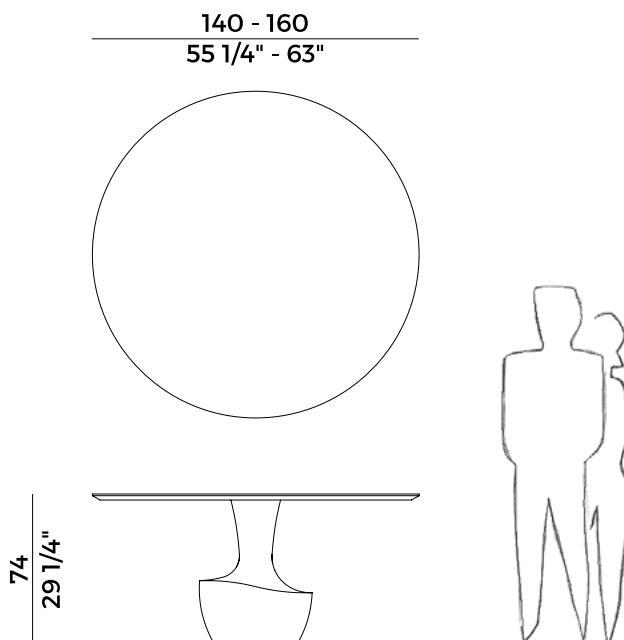
Informazioni tecniche \ *Technical information*

Descrizione tecnica \ *Technical description*

Tavolo tondo in due dimensioni con base in quarzo resinato e piano in vetro bronzo o in marmo Bianco Carrara e Grigio Carnico. Finiture di collezione.

Round table in two sizes with resinated quartz base and bronzed glass, White Carrara or Grigio Carnico marble tops. Finishes as per collection.

Dimensioni \ *Dimensions*



Imballaggi \ *Packaging*



PACKAGING - Ø 140

2 box = m³ 1.89

gross weight glass - Kg 177

gross weight marble - Kg 186



PACKAGING - Ø 160

2 box = m³ 2.40

gross weight glass - Kg 186

gross weight marble - Kg 201

Finiture \ *Finishes*

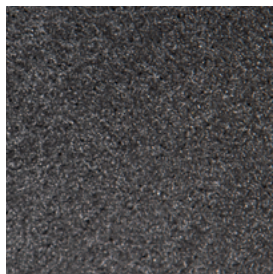
Finiture base \

Base finishes

Quarzo resinato \ *Resinated quartz*



Light Grey \
Light Grey

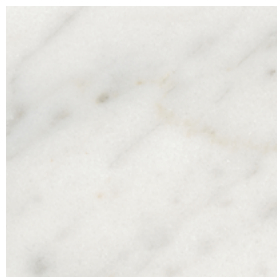


Antracite \
Anthracite

Finiture piano \

Top finishes

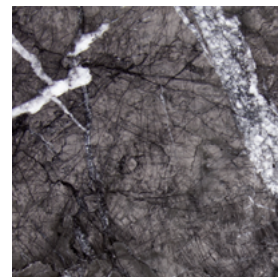
Marmo \ *Marble*



Bianco Carrara Opaco \
Matt White Carrara



Bianco Carrara Lucido \
Glossy White Carrara



Grigio Carnico \
Grigio Carnico

Vetro \ *Glass*



Vetro Bronzo \
Bronzed Glass