

# CAMILLE

*Opera Design*



# CAMILLE

Opera Design

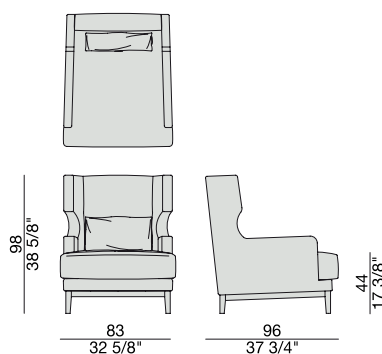
Poltrona con struttura in massello di frassino e rivestimento sfoderabile nei tessuti della collezione, con cuscino poggiatesta.

Armchair with frame in solid ash and removable cover in the fabrics of the collection. With back cushion.

Sessel mit Gestell aus massiver Esche und abnehmbarem Bezug in den Stoffen der Kollektion, mit Rückkissen.

Fauteuil avec structure en frêne massif et revêtement déhoussable dans les tissus de la collection, avec coussin pour dossier.

Butaca con estructura en fresno macizo y revestimiento desenfundable en las telas de la colección. Con cojín para respaldo.



## ESSENZE | *Essences*



**Frassino Naturale**  
Natural Ash



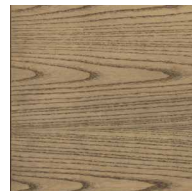
**Frassino**  
Ash  
*tinto/stained moka*



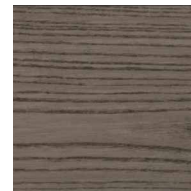
**Frassino**  
Ash  
*tinto noce canaletta  
canaletta walnut stained*



**Frassino**  
Ash  
*tinto/stained wengé*

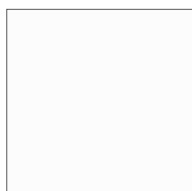


**Frassino**  
Ash  
*tinto/stained canapa*



**Frassino**  
Ash  
*tinto/stained caffè*

## LACCATO OPACO PORO APERTO | *Matt lacquered open pore*



**Bianco**  
White  
(RAL 9016)



**Avorio**  
Ivory  
(RAL 1013)



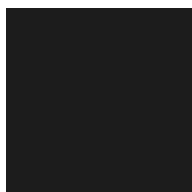
**Argilla**  
Mud  
(RAL 7006)



**Piombo**  
Lead  
(NCS S5005G20Y)



**Cioccolato**  
Chocolate  
(RAL 8019)



**Nero**  
Black  
(RAL 9005)



**Granata**  
Garnet red  
(NCS S4050Y90R)



**Pistacchio**  
Pistachio green  
(PANTONE 5825)



**Avio**  
Aviation blue  
(PANTONE 5415)

## PELLE | *Leather*

### *Categoria LUX*



Nabuk

### *Categoria PLUS*



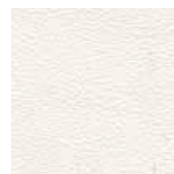
Pelle PLUS

### *Categoria PELLE*



Pelle

### *Categoria EXTRA*



Pelle EXTRA

## RIVESTIMENTO | *Cover*

### *Categoria A*



Hallingdal 65

### *Categoria B*



Rabat



Milord

### *Categoria C*



Fashion



Moran



Thalys



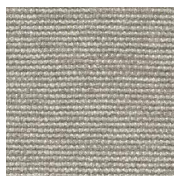
Velvet



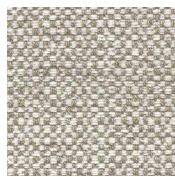
Wool



Flax



Armam



Ikat



Loom

### *Categoria D*



Astra



Ecopelle

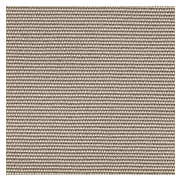


Range



Tress

### *Categoria E*



Cotone



Dorian



In Bianco/Calico

### *Categoria COM*

Disponibile con tessuto fornito dal cliente.

*Available with fabric supplied by the customer.*

Verfügbar mit Kundenstoff.

*Disponible avec tissu du client.*

Disponibile con tela suministrada por el cliente.