

Chill-Out Armchair

Designer: Gordon Guillaumier
Year: 2013

Chill-Out is a system of sofas and armchairs that can stand alone or create a vast range of different linear or corner compositions. It features 'a light, slim base and cosy, comfortable cushioning, to which back and armrests can be added. An ideal combination both for domestic and collective spaces, particularly in the version with a built-in coffee table.

Developed by Tacchini in Italy

Dimensions (cm)

Cod. OCHILP70

Cod. OCHILQ70

Cod. OCHILR70

Cod. OCHILI70

Cod. OCHILP70H
High back/arms

Cod. OCHILQ70H
High back/arms



W 74 D 69 H 71 cm
Seat H 44 cm

W 74 D 69 H 71 cm
Seat H 44 cm

W 74 D 69 H 71 cm
Seat H 44 cm

W 74 D 69 H 44 cm
Seat H 44 cm

W 74 D 69 H 71 cm
H seat 44 cm

W 74 D 69 H 71 cm
H seat 44 cm

Non-removable
covers

CAD Files:
3D (.dwg, .3ds)
2D (.dwg)

Download CAD
files at tacchini.it/en/downloads

Materials description

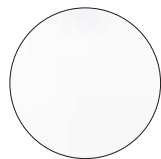
Internal frame: poplar plywood 18 mm thick.

Padding: differentiated-density polyurethane foam.

Base: tubular metal base Ø 16 mm, available matt chromed or power-coated painted.

Upholstery: non removable cover.

Painted base



T02 RAL 9016
White



T03 RAL 7016
Grey

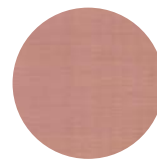
Chromed base



T24
Satin Chromed



T25
Matt Champagne Gold



T64
Brush Matt Copper

Top



T30
Matt White Carrara



T31
Shiny White Calacatta



T33
Matt Black Travertine



T35
Matt Basaltina

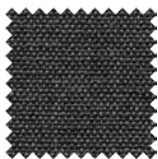
Suggested upholsteries



Cassia



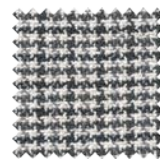
Davidia



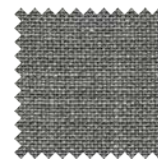
Deserti



Draba



Leonotis



Thesium

Materials informations



Poplar plywood	45%
Polyurethane	32%
Upholstery	12%
Metal	7%
Marble	4%

Polyurethane

Flexible expanded polyurethane is a solid elastic polymeric material with open cell structure. It is a non-toxic material and above all free from ozone-damaging components. Production and processing of the polyurethane we use meet the objectives of the new policy of ensuring the protection of human health and of the environment. We focus in particular on the choice and use of the types of density of polyurethane suitable for preserving over the years the features of load capacity, elasticity and resilience. For products used in public spaces flame-retardant expanded polyurethane is chosen, tested and certified according to international regulations.

Marble

Marble is a natural material obtained through a metamorphic process from sedimentary rock such as limestone or dolomite, causing crystallisation of the calcium carbonate. The specific features of the material can be seen in the marble we use which is worked by artisans with machinery and polished with natural waxes which go to respect the actual essence of the nature of the marble.

Wood

Wood is a renewable raw material. All products derived from wood, such as for example plywood, have the advantage of being able to be machined more easily than wood and do not deform. The timber we use – solid or plywood – comes mainly from European and Russian forests and is seasoned to specific values of humidity with tests. Most of the structures of the products in the collection have a frame in solid pine or ash, or in beech or poplar plywood.

Metal

The need to combine complex yet lightweight shapes with resistant materials necessarily involves the use of metals such as steel and aluminium. products in polyurethane foam are made with an inner steel frame for adding strength to the structure. The bases are in tubular metal which can be chromed with a gloss or satin finish or painted with epoxy powders.

Recyclability

All Chill-Out Armchair elements are 100% recyclable when fully separated. Tacchini undertakes on-going research and development, with efforts made to introduce products which are a perfect combination of function and safety without jeopardizing the final design of the same articles. During production attempts are made to minimize noise and emission levels and to reduce rejects as far as possible. All the single materials which make up the production process, once disassembled, can be reused several times, maintaining a high quality standard.

Packaging

Chill-Out Armchair element is dispatched already assembled. It is protected by tissue paper and cellophane to protect the covering from dust and direct contact with the cardboard. The product is packed in rigid cardboard boxes suitable for world export. Manufacture of the packaging observes the criteria for recovery both as recycling and energy recovery and composting.

Once a product reaches the end of its life cycle it has to be eliminated.

To discover more about Tacchini environmental policy please visit: www.tacchini.it



Gordon Guillaumier

Gordon Guillaumier was born in 1966, and was educated firstly in Malta, then in Switzerland, England and Italy. He graduated from IED in Milan (1988-91), before specializing in design at the Domus Academy, Milan (1992). In 1993 he began working with Baleri Associati, as well as collaborating with architect Rodolfo Dordoni. In 2002 he set up his own design studio in Milan, principally working on product design, but also for design consultancy projects. In 2006 he lectured in industrial design at Milan's Politecnico university.

Other products by Gordon Guillaumier: Cage, Chill-Out, Chill-Out High, Chill-Out Table, Coot, Face to Face, Ledge, Ruler, Soap, Spindle.

Tacchini Projects:



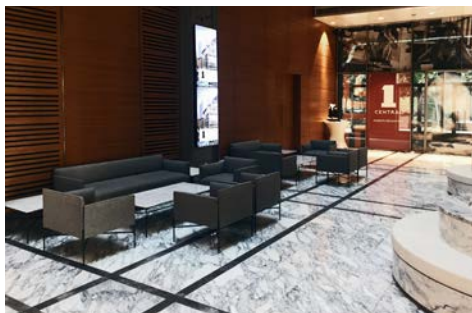
Property Finder Group
(Dubai, United Arab Emirates)



Property Finder Group
(Dubai, United Arab Emirates)



Mayfair Office
(London, Great Britain)



Dubai World Trade Centre
(Dubai, United Arab Emirates)