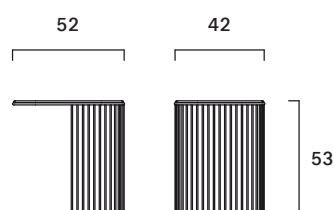


# Comb 40

FG 487.02  
design Gordon Guillaumier

Famiglia di tavolini fronte e fianco divano con struttura in tondino di metallo, disponibile in finitura nera cromata o oro. Piano laccato disponibile nei colori: grigio, blu scuro, bordeaux e beige.

Collection of accent tables with a metal rod structure, with chromed, black or brass finish. Grey, dark blue, bordeaux or beige MDF lacquered top.



Peso/Weight: 7,8 kg  
Cubaggio/Cubage: 0,18 m<sup>3</sup> 9,9 Kg 50x59x61 cm

## Certificazioni / Certifications

Legno/Wood: CARB II  
TSCA TITLE VI

## Materiali / Materials

Rivestimento: -  
Seat upholstery: -

Finiture: Ottone spazzolato, Verniciato  
Finish: Brushed brass, Lacquered

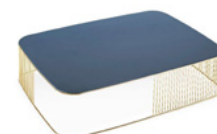
Base: Metallo  
Base: Steel

Imbottitura: -  
Padding: -

Finiture top: Blu scuro / grigio / bordeaux / beige  
Top finish: Dark blue / grey / bordeaux / beige

Top: MDF  
Top: MDF

## Comb Collection



Comb 100  
FG 487.01



Frag Srl reserves the right to make technological and aesthetic improvements to its models, including changes to the sizes and materials, without notice. The technical drawings do not define the details of the product. The measurement in the technical sheet are indicative and may undergo changes. In particular, the dimensions of the padded parts are subject to usage tolerances over time caused by the the normal adjustment of the padding. For the specific information please contact the dealer closest to you.