



Costela

Designer: Martin Eisler
Year: (1952) 2019

Tacchini is delighted to reissue Costela by Martin Eisler, icon of Brazilian 1950s design. An elegant yet informal armchair. With its sensual aesthetic, natural materials and intelligent design, it offers sophisticated personalization. Costela is a paradigm of creative design. The fundamental idea on which the chair is built is the beautiful wooden structure with its wooden ribs embracing both the seat and the back, and the functional and aesthetic completion of the detail, ensuring absolute comfort with an extremely natural style in their almost random position. The structure is easy to dismantle and recycle, a characteristic perfect for the current need and tendency to produce furniture that gives due consideration to the principles of sustainability and durability. The possibility to play with the fabric coverings makes Costela not only an unmistakable piece of history, but also an item of renewed and irresistible modernity.

Developed by Tacchini in Italy

Dimensions (cm)

Cod. OCOS74

Cod. OCOSP74



W 74 D 80 cm
H 83 cm
H seat 40 cm

W 74 D 55 cm
H 40 cm
H seat 40 cm

Removable fabric
and leather covers

CAD Files:
3D (.dwg, .3ds)
2D (.dwg)

Download CAD
files at tacchini.it/en/downloads

Materials description

Structure: open pore ash slats in various colors. Metal base Ø 20 mm painted T07.

Padding: differentiated-density polyurethane foam.

Upholstery: not removable.

Structure

T115
Walnut

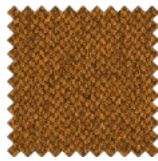


T121
Black

Suggested upholsteries



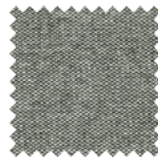
Bakul



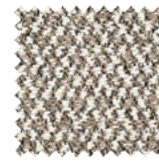
Bamboo



Bopha



Bryony



Cacao



Caladium



Calantha



Cambria



Descampsia



Dianella



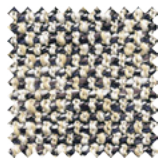
Dionea



Drosera



Dulcamara



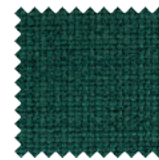
Equisetum



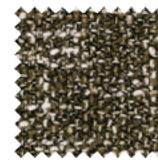
Euclidium



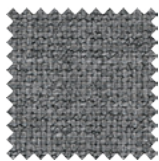
Eugenia



Evonimo



Eremurus



Escallonia



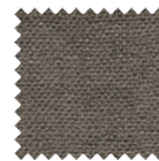
Escobaría



Laelia



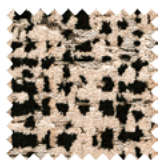
Lamium



Lars



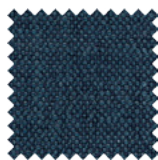
Ligustrum



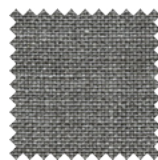
Salix



Sedum



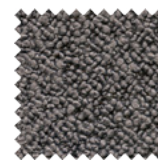
Schinus



Thesium



Tibouchina



Ricinus



Mirabilis



Guarana



Leather



Aniline Leather

Materials informations



Ash	58%
Polyurethane foam	23%
Upholstery	19%

Polyurethane

Flexible expanded polyurethane is a solid elastic polymeric material with open cell structure. It is a non-toxic material and above all free from ozone-damaging components. Production and processing of the polyurethane we use meet the objectives of the new policy of ensuring the protection of human health and of the environment. We focus in particular on the choice and use of the types of density of polyurethane suitable for preserving over the years the features of load capacity, elasticity and resilience. For products used in public spaces flame-retardant expanded polyurethane is chosen, tested and certified according to international regulations.

Wood

Wood is a renewable raw material. All products derived from wood, such as for example plywood, have the advantage of being able to be machined more easily than wood and do not deform. The timber we use – solid or plywood – comes mainly from European and Russian forests and is seasoned to specific values of humidity with tests. Most of the structures of the products in the collection have a frame in solid pine or ash, or in beech or poplar plywood.

Recyclability

All Montevideo elements are 100% recyclable when fully separated. Tacchini undertakes on-going research and development, with efforts made to introduce products which are a perfect combination of function and safety without jeopardizing the final design of the same articles. During production attempts are made to minimize noise and emission levels and to reduce rejects as far as possible. All the single materials which make up the production process, once disassembled, can be reused several times, maintaining a high quality standard.

Packaging

Montevideo element is dispatched already assembled. It is protected by tissue paper and cellophane to protect the covering from dust and direct contact with the cardboard. The product is packed in rigid cardboard boxes suitable for world export. Manufacture of the packaging observes the criteria for recovery both as recycling and energy recovery and composting.

Once a product reaches the end of its life cycle it has to be eliminated.

To discover more about Tacchini environmental policy please visit: www.tacchini.it



Martin Eisler

Born in Vienna in 1913, the son of the famous art historian Max Eisler, one of the founding members of the Austrian Werkbund, Martin Eisler studied in Vienna under the noted architects Oskar Strnad and Clemens Holzmeister. In 1938 he moved to Buenos Aires, where he immediately set about holding his first exhibition of designs and furniture at the Mueller Gallery, which became the National Office of Fine Arts in 1940, in the Palais de Glace. In 1945 he founded the business Interieur with Arnold Hackel, which sold furniture and objects designed by the duo, launching his career as a designer. His work also took him to Brazil, where in 1955 he went into partnership with Carlo Hauner from the company Moveis Artesanais, and became Art Director of the company Forma in São Paulo. Eisler's experience in Brazil aroused his interest in exotic woods and varnishing and lacquering techniques on wood, glass and bronze. Eisler's two businesses subsequently began to work synergistically, producing furniture that was highly successful both in Argentina and in Brazil, which culminated in him signing a contract with Knoll International between the late '50s and early '60s. This led to his growth and establishment at a time when the contract furniture market was at the height of its expansion, with the founding of the new capital city Brasilia and the Oscar Niemeyer projects, to which he contributed with great success. Also greatly appreciated as an architect for his projects characterised by their all-encompassing creativity, which customised every detail, from buildings to furniture, Eisler also worked as a set designer and opera director. His most famous design pieces include the Reversível and Costela chairs. The famous auction house, Christie's registered the first purchase in 1999. Martin Eisler's furniture has always been highly esteemed throughout the world.

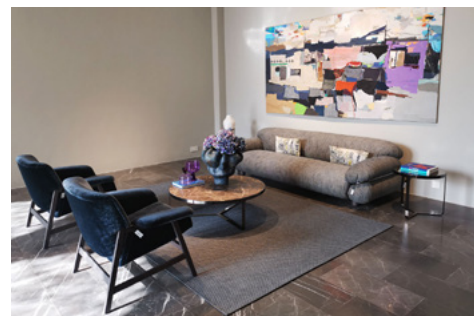
Selected project



Private House
(Melbourne, Australia)



Louis Vuitton Maison
(Osaka, Japan)



Arcadia Showroom
(Safat, Kuwait)