



Cut, 910/PL
poltrona lounge \ lounge armchair

Cut nasce dalla volontà di sviluppare una seduta dalle forme ergonomiche e avvolgenti. Il risultato è una poltrona lounge dall'aspetto leggero ed estremamente confortevole, grazie anche ai cuscini di seduta e poggiatesta, sostenuta da un'essenziale base in alluminio verniciato nero goffrato, proposta in due versioni: fissa e a quattro razze. I profili netti e le cuciture a vista in corrispondenza delle incisioni conferiscono alla seduta un look tailor-made. Accompagna la poltrona lounge l'omonimo poggiapiedi, con base fissa e a quattro razze, che ne riprende le caratteristiche estetiche.

Cut comes from the desire to create a seating with ergonomic and embracing, wrapping forms. The result is a lounge armchair with a light and extremely comfortable look, thanks also to its seat and headrest cushions, supported by an essential embossed black painted aluminum base, available in two versions: fixed and four-star base. The profiles and the visible stitching in correspondence of the incisions give the seat a tailor-made look. The homonymous footrest, available with a fixed or four-star base, accompanies the lounge armchair, which resumes its aesthetic characteristics.

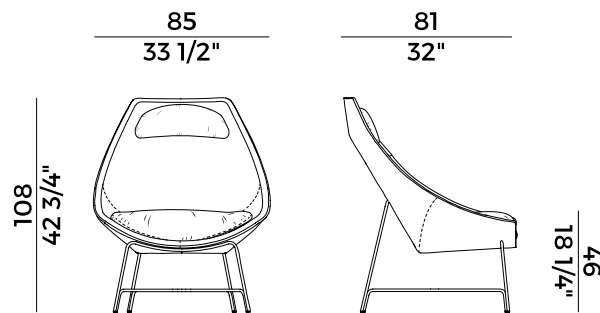
Informazioni tecniche \ *Technical information*

Descrizione tecnica \ *Technical description*





Poltrona lounge in versione fissa con base in alluminio verniciato nero goffrato. Imbottitura in poliuretano espanso ignifugo. Rivestimenti di collezione.

Lounge armchair in the fixed version with base in embossed black painted aluminum. Padded in fire retardant polyurethane foam. Coverings as per collection.

Dimensioni \ *Dimensions*



Consumi stoffe \ *Fabric and leather requirements*

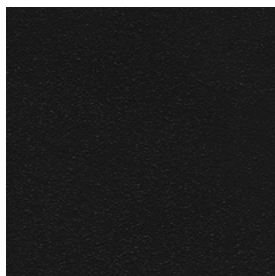
FABRIC / LEATHER REQUIREMENTS				FABRIC / LEATHER REQUIREMENTS			
		x1	x2			x1	x2
	H 140	ml 3,80	ml 7,60		H 140	yd 4,20	yd 8,35
	LEATHER	m ² 8,50			LEATHER	ft ² 92	

Finiture \ *Finishes*

Finiture struttura \

Frame finishes

Alluminio \ *Aluminium*



Alluminio Nero Goffrato \
Embossed Black Aluminium

Rivestimenti \

Coverings

Tessuto, ecopelle, pelle \ *Fabric, eco-leather, leather*

**Collezione Cut **
Cut collection

Poltrona lounge in versione girevole o fissa con base in alluminio verniciato nero goffrato.

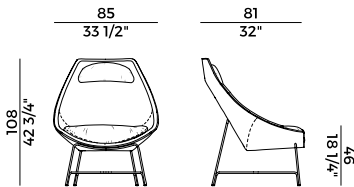
Poggiapiedi con base in alluminio verniciato nero goffrato.

Imbottitura in poliuretano espanso ignifugo. Rivestimenti di collezione.

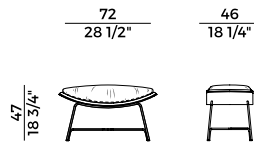
Lounge armchair available in the swivel or fixed versions with base in embossed black painted aluminum.

Footrest with base in embossed black painted aluminum.

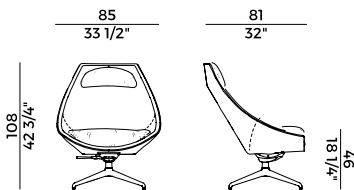
Padded in fire retardant polyurethane foam. Coverings as per collection.



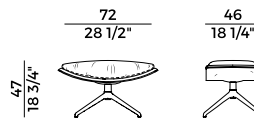
910/PL
lounge girevole \ swivel lounge armchair



910/PP
poggiapiedi \ footrest



910/PLG
lounge girevole \ swivel lounge armchair



910/PPG
poggiapiedi \ footrest



Cut, 910/PP
poggiapiedi \ *footrest*

Cut nasce dalla volontà di sviluppare una seduta dalle forme ergonomiche e avvolgenti. Il risultato è una poltrona lounge dall'aspetto leggero ed estremamente confortevole, grazie anche ai cuscini di seduta e poggiatesta, sostenuta da un'essenziale base in alluminio verniciato nero gofrato, proposta in due versioni: fissa e a quattro razze. I profili netti e le cuciture a vista in corrispondenza delle incisioni conferiscono alla seduta un look tailor-made. Accompagna la poltrona lounge l'omonimo poggiapiedi, con base fissa e a quattro razze, che ne riprende le caratteristiche estetiche.

Cut comes from the desire to create a seating with ergonomic and embracing, wrapping forms. The result is a lounge armchair with a light and extremely comfortable look, thanks also to its seat and headrest cushions, supported by an essential embossed black painted aluminum base, available in two versions: fixed and four-star base. The profiles and the visible stitching in correspondence of the incisions give the seat a tailor-made look. The homonymous footrest, available with a fixed or four-star base, accompanies the lounge armchair, which resumes its aesthetic characteristics.

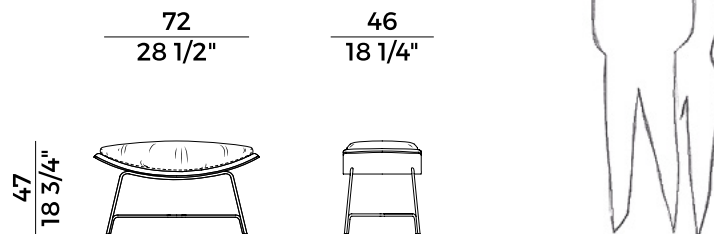
Informazioni tecniche \ *Technical information*

Descrizione tecnica \ *Technical description*





Poggiapiedi con base in alluminio verniciato nero goffrato. Imbottitura in poliuretano espanso ignifugo. Rivestimenti di collezione.

Footrest with base in embossed black painted aluminum. Padded in fire retardant polyurethane foam. Coverings as per collection.

Dimensioni \ *Dimensions*



Consumi stoffe \ *Fabric and leather requirements*

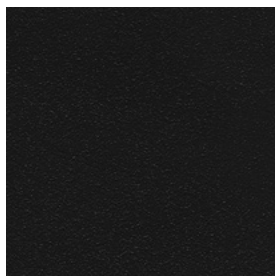
FABRIC / LEATHER REQUIREMENTS				FABRIC / LEATHER REQUIREMENTS			
		x1	x2			x1	x2
	H 140	ml 1,50	ml 3,00		H 140	yd 1,65	yd 3,30
	LEATHER	m ² 2,90			LEATHER	ft ² 32	

Finiture \ *Finishes*

Finiture struttura \

Frame finishes

Alluminio \ *Aluminium*



Alluminio Nero Goffrato \
Embossed Black Aluminium

Rivestimenti \

Coverings

Tessuto, ecopelle, pelle \ *Fabric, eco-leather, leather*

**Collezione Cut **
Cut collection

Poltrona lounge in versione girevole o fissa con base in alluminio verniciato nero goffrato.

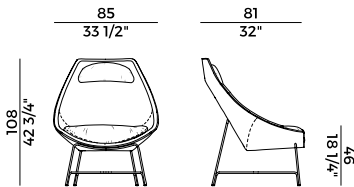
Poggiapiedi con base in alluminio verniciato nero goffrato.

Imbottitura in poliuretano espanso ignifugo. Rivestimenti di collezione.

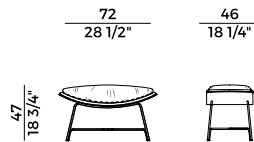
Lounge armchair available in the swivel or fixed versions with base in embossed black painted aluminum.

Footrest with base in embossed black painted aluminum.

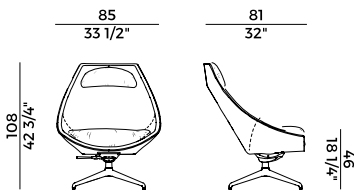
Padded in fire retardant polyurethane foam. Coverings as per collection.



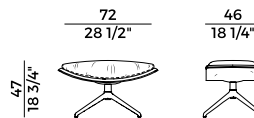
910/PL
lounge girevole \ swivel lounge armchair



910/PP
poggiapiedi \ footrest



910/PLG
lounge girevole \ swivel lounge armchair



910/PPG
poggiapiedi \ footrest