





Doodle Stool

Designer: Claesson Koivisto Rune  
Year: 2008

Like the armchair from the same collection, the chair and stool also draw their inspiration from doodles, which are depicted here in the visible tone-on-tone or contrasting stitching in the covering. Designed to fulfil a wide range of needs, Doodle chairs and stools are equally well-suited to home and contract settings, from the workplace through to the hospitality sector.

Developed by Tacchini in Italy

Dimensions (cm)

Cod. ODOS49



W 49 D 53 cm  
H 100 cm  
H seat 76 cm

Non-removable  
covers

CAD Files:  
3D (.dwg, .3ds)  
2D (.dwg)

Download CAD  
files at [tacchini.it/  
en/downloads](http://tacchini.it/en/downloads)

Materials description

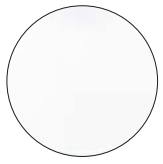
Internal frame: cold foam with metal inserts.

Base: tubular metal base Ø 16 mm, powder-coated painted or chromed.

Upholstery: non removable cover.

---

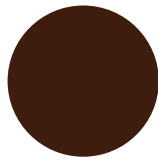
Painted base



T02 RAL 9016  
White



T07 RAL 9011  
Black



T08 RAL 8019  
Brown

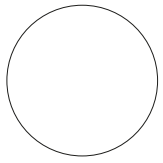
Chromed base



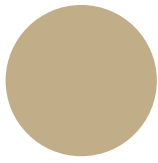
T24  
Satin Chrome

---

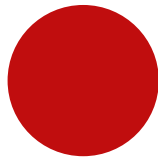
Stitches



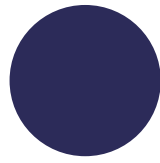
White



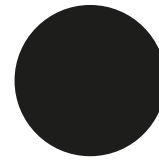
Beige



Red



Blue



Black

---

Suggested upholsteries



Divina



Super Leather

Materials informations



Cold foam	40%
Metal	35%
Upholstery	23%
Plastic components	2%

Polyurethane

Flexible expanded polyurethane is a solid elastic polymeric material with open cell structure. It is a non-toxic material and above all free from ozone-damaging components. Production and processing of the polyurethane we use meet the objectives of the new policy of ensuring the protection of human health and of the environment. We focus in particular on the choice and use of the types of density of polyurethane suitable for preserving over the years the features of load capacity, elasticity and resilience. For products used in public spaces flame-retardant expanded polyurethane is chosen, tested and certified according to international regulations.

Metal

The need to combine complex yet lightweight shapes with resistant materials necessarily involves the use of metals such as steel and aluminium. Products in polyurethane foam are made with an inner steel frame for adding strength to the structure. The bases are in tubular metal which can be chromed with a gloss or satin finish or painted with epoxy powders.

Foam

Similar to polyurethane, foam is used for moulding products with special and organic shapes. It is a material which is highly resistant to ageing and flames. Its appearance at the edges is clean, compact. All products made with a foam structure offer a solution with extraordinary comfort.

Recyclability

All Doodle Stool elements are 100% recyclable when fully separated. Tacchini undertakes on-going research and development, with efforts made to introduce products which are a perfect combination of function and safety without jeopardizing the final design of the same articles. During production attempts are made to minimize noise and emission levels and to reduce rejects as far as possible. All the single materials which make up the production process, once disassembled, can be reused several times, maintaining a high quality standard.

Packaging

Doodle Stool element is dispatched already assembled. It is protected by tissue paper and cellophane to protect the covering from dust and direct contact with the cardboard. The product is packed in rigid cardboard boxes suitable for world export. Manufacture of the packaging observes the criteria for recovery both as recycling and energy recovery and composting.

Once a product reaches the end of its life cycle it has to be eliminated.

To discover more about Tacchini environmental policy please visit: [www.tacchini.it](http://www.tacchini.it)



---

Claesson Koivisto Rune

The Claesson Koivisto Rune studio was established in 1995 as a multidisciplinary architecture and design workshop, in line with the classic Scandinavian tradition, but with the aim of exploring new concepts, and pursuing the values of simplicity and innovation. The three Swedes have created architectural designs throughout the world and in every sector, from homes to restaurants, retail to executive buildings, as well as furniture ranges for numerous major international firms.

Other products by Claesson Koivisto Rune: Campo, Doodle, Doodle Armchair, Highlife, Isola, Kelly B, Kelly C, Kelly E, Kelly H, Kelly L, Kelly O, Kelly T, Kelly V, Kelly W, Lima, Lima Armchair, Misura S, M, L, XL, Montevideo, Montevideo Armchair, Pisa, Quartier, Santiago, Santiago Armchair, Spin, Split.