



HOTTO

E. Garbin - M. Dell'Orto

2016

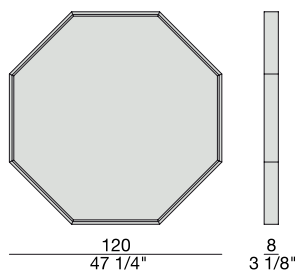
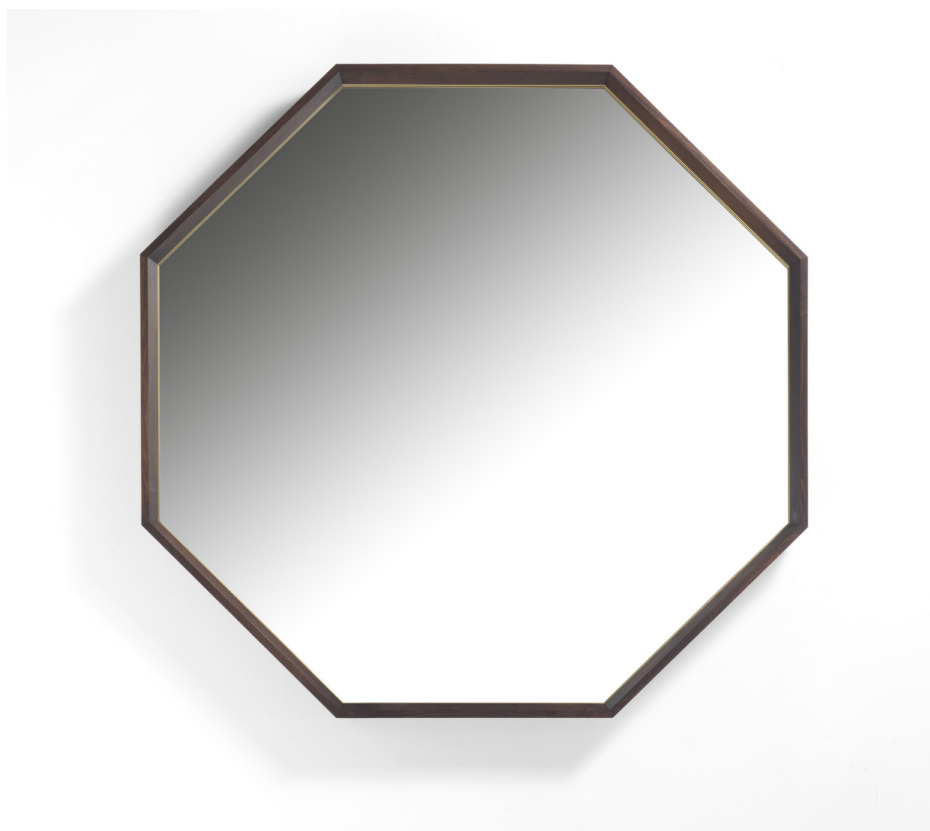
Specchio ottagonale da parete con cornice in massello di frassino con inserti in ottone spazzolato.

Octagonal wall mirror with frame in solid ash wood with brushed brass inserts.

Achteckiger Wandspiegel mit Rahmen aus massivem Esche und Einlagen aus gebürstetem Messing.

Miroir octogonal à fixer au mur avec cadre en frêne massif avec joints en cuivre brossé.

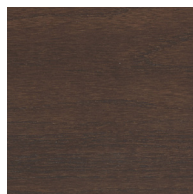
Espejo octogonal de pared con marco en fresno macizo con inserciones en latón cepillado.



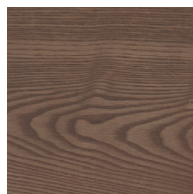
ESSENZE | *Essences*



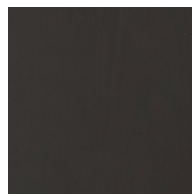
Frassino Naturale
Natural Ash



Frassino
Ash
tinto/stained moka

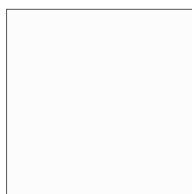


Frassino
Ash
tinto noce canaletta
canaletta walnut stained

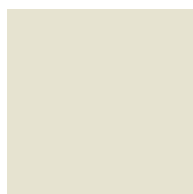


Frassino
Ash
tinto/stained wengé

LACCATO OPACO PORO APERTO | *Matt lacquered open pore*



Bianco
White
(RAL 9016)



Avorio
Ivory
(RAL 1013)



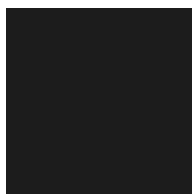
Argilla
Mud
(RAL 7006)



Piombo
Lead
(NCS S5005G20Y)



Cioccolato
Chocolate
(RAL 8019)



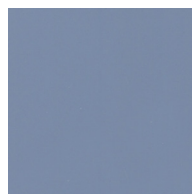
Nero
Black
(RAL 9005)



Granata
Garnet red
(NCS S4050Y90R)



Pistacchio
Pistachio green
(PANTONE 5825)



Avio
Aviation blue
(PANTONE 5415)

METALLO | *Metal*



Ottone spazzolato
Brushed brass

SPECCHIO | *Mirror*



Naturale
Clear