

KAU

CLAUDIO BELLINI



Sedia con struttura in metallo completamente rivestita in cuoietto lavorato e cucito a mano.

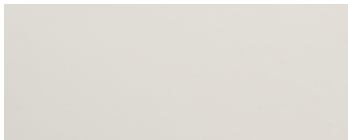
Chair with metal frame completely covered in decorated and hand-sewn hide leather.

Stuhl mit einer Metalstruktur gefertigt und völlig aus Kernleder bezogen.

Chaise réalisée avec une structure en métal complètement revêtue en cuir cousu à la main.

Silla con estructura en metal completamente revestida en cuero artificial elaborado y cosido a mano.

OLIMPIA: PELLE · LEATHER · LEDER · CUIR · CUERO



CT002



CT003



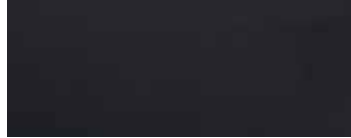
CT008



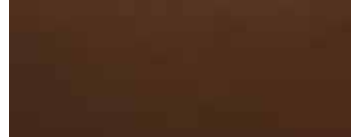
CT009



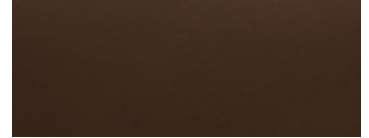
CT010



CT012



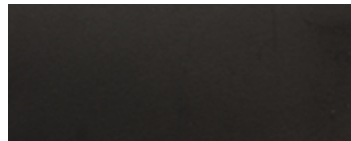
CT013



CT015



CT018



CT017

DISPONIBILE SOLO IN CUDOIO OLIMPIA

AVAILABLE ONLY IN OLIMPIA LEATHER

NUR AUS KERLEDER OLIMPIA VERFÜGBAR

DISPONIBLE UNIQUEMENT EN CUIR OLIMPIA

DISPONIBLE SÓLO EN CUERO OLIMPIA

CM: L. 50 · P. 48 · H. 45,9/78,5

