



# Lea Table

design Paolo Vernier, 2019

Italian elegance and conviviality are enclosed in the finely refined shape of the Lea table. The thin lines, the contemporary appeal and the attention to every detail tell of a timeless design, to furnish spaces in a mix of aesthetics and functionality.

Lea is a fixed table with four leg base in metal. Barrel top in ceramic or wood.



## Colors and Materials

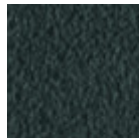
### Structure



White steel



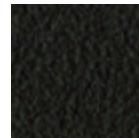
Sand steel



Grafite metal

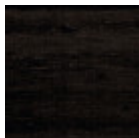


Black steel



Brown steel

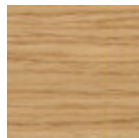
### Coating



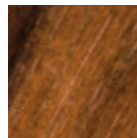
Black lacquered veneered ash



White lacquered veneered ash



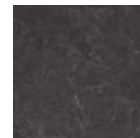
Veneered ash natural oak finish



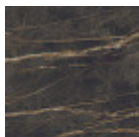
Veneered flamed walnut



Glossy white calacatta ceramic

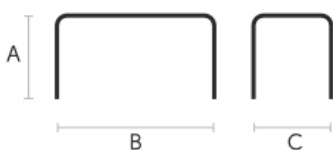


Glossy greek marble ceramic



Noir desir glossy marble ceramic

## Dimensions



A (cm) B (cm) C (cm)  
(inch) (inch) (inch)

<b>190x115</b> (cm) (inch)	75 29.5	190 74.8	115 45.3
<b>220x120</b> (cm) (inch)	75 29.5	220 86.6	120 47.2

## Volumetric Details

**Weight** 140 Kg

**Volume** 0.53 mc

**Package** 2

## Downloads

- [.3ds Table Lea 190x115 \(zip\)](https://www.midj.com/images/uploads/resources/3d-lea-tavolo190x115-3ds.zip) - <https://www.midj.com/images/uploads/resources/3d-lea-tavolo190x115-3ds.zip>
- [.dxf Table Lea 190x115 \(zip\)](https://www.midj.com/images/uploads/resources/3d-lea-tavolo190x115-dxf.zip) - <https://www.midj.com/images/uploads/resources/3d-lea-tavolo190x115-dxf.zip>
- [.dwg Table Lea 190x115 \(zip\)](https://www.midj.com/images/uploads/resources/3d-lea-tavolo190x115-dwg.zip) - <https://www.midj.com/images/uploads/resources/3d-lea-tavolo190x115-dwg.zip>
- [.obj Table Lea 190x115 \(zip\)](https://www.midj.com/images/uploads/resources/3d-lea-tavolo190x115-obj.zip) - <https://www.midj.com/images/uploads/resources/3d-lea-tavolo190x115-obj.zip>
- [.fbx Table Lea 190x115 \(zip\)](https://www.midj.com/images/uploads/resources/3d-lea-tavolo190x115-fbx.zip) - <https://www.midj.com/images/uploads/resources/3d-lea-tavolo190x115-fbx.zip>
- [.3ds Table Lea 220x120 \(zip\)](https://www.midj.com/images/uploads/resources/3d-lea-tavolo220x120-3ds.zip) - <https://www.midj.com/images/uploads/resources/3d-lea-tavolo220x120-3ds.zip>
- [.dwg Table Lea 220x120 \(zip\)](https://www.midj.com/images/uploads/resources/3d-lea-tavolo220x120-dwg.zip) - <https://www.midj.com/images/uploads/resources/3d-lea-tavolo220x120-dwg.zip>
- [.dxf Table Lea 220x120 \(zip\)](https://www.midj.com/images/uploads/resources/3d-lea-tavolo220x120-dxf.zip) - <https://www.midj.com/images/uploads/resources/3d-lea-tavolo220x120-dxf.zip>
- [.obj Table Lea 220x120 \(zip\)](https://www.midj.com/images/uploads/resources/3d-lea-tavolo220x120-obj.zip) - <https://www.midj.com/images/uploads/resources/3d-lea-tavolo220x120-obj.zip>
- [.fbx Table Lea 220x120 \(zip\)](https://www.midj.com/images/uploads/resources/3d-lea-tavolo220x120-fbx.zip) - <https://www.midj.com/images/uploads/resources/3d-lea-tavolo220x120-fbx.zip>

## Materials Certifications

### Black lacquered veneered ash

Veneered woods are the result of a process of gluing extremely thin sheets of wood applied to various types of supports to produce furnishing elements, which have a similar appearance to solid wood, but with better performance in terms of resistance to woodworms, lightness and greater stability over time.

If exposed to light, and in any case with the passage of time, the color of the veneer changes. It may happen that furniture of the same color purchased after some time, show color differences. Upon request, the veneered parts can be supplied with certified origin from forests managed in a correct and responsible manner, according to the rigorous environmental standards established by the FSC circuit.

#### CLEANING AND MAINTENANCE

For ordinary cleaning of veneered woods, use a cloth moistened with neutral soap well diluted in water or specific products. Always dry after each application with a dry cloth or paper towel. Do not use abrasive products. In case of accidental spills of substances or liquids, immediately dab the wood with paper towel or with a dry and clean cloth. Avoid proximity to heat sources. Evenly expose the veneered woods to light, for example by periodically opening the table extensions that are stored inside the structure, or by moving any object placed on the surface, such as vases and accessories.

These tips are cleaning recommendations and do not guarantee complete stain removal.

We recommend that you always test the cleaning method on a hidden part of the item to check the resistance of the color.

Colour samples are to be considered approximate for each product. Slight color differences between a lot and the other are to be considered normal.

## Materials Certifications

### White lacquered veneered ash

Veneered woods are the result of a process of gluing extremely thin sheets of wood applied to various types of supports to produce furnishing elements, which have a similar appearance to solid wood, but with better performance in terms of resistance to woodworms, lightness and greater stability over time.

If exposed to light, and in any case with the passage of time, the color of the veneer changes. It may happen that furniture of the same color purchased after some time, show color differences. Upon request, the veneered parts can be supplied with certified origin from forests managed in a correct and responsible manner, according to the rigorous environmental standards established by the FSC circuit.

#### CLEANING AND MAINTENANCE

For ordinary cleaning of veneered woods, use a cloth moistened with neutral soap well diluted in water or specific products. Always dry after each application with a dry cloth or paper towel. Do not use abrasive products. In case of accidental spills of substances or liquids, immediately dab the wood with paper towel or with a dry and clean cloth. Avoid proximity to heat sources. Evenly expose the veneered woods to light, for example by periodically opening the table extensions that are stored inside the structure, or by moving

any object placed on the surface, such as vases and accessories.

These tips are cleaning recommendations and do not guarantee complete stain removal.

We recommend that you always test the cleaning method on a hidden part of the item to check the resistance of the color.

Colour samples are to be considered approximate for each product. Slight color differences between a lot and the other are to be considered normal.

## Materials Certifications

### Veneered ash natural oak finish

Veneered woods are the result of a process of gluing extremely thin sheets of wood applied to various types of supports to produce furnishing elements, which have a similar appearance to solid wood, but with better performance in terms of resistance to woodworms, lightness and greater stability over time.

If exposed to light, and in any case with the passage of time, the color of the veneer changes. It may happen that furniture of the same color purchased after some time, show color differences. Upon request, the veneered parts can be supplied with certified origin from forests managed in a correct and responsible manner, according to the rigorous environmental standards established by the FSC circuit.

#### CLEANING AND MAINTENANCE

For ordinary cleaning of veneered woods, use a cloth moistened with neutral soap well diluted in water or specific products. Always dry after each application with a dry cloth or paper towel. Do not use abrasive products. In case of accidental spills of substances or liquids, immediately dab the wood with paper towel or with a dry and clean cloth. Avoid proximity to heat sources. Evenly expose the veneered woods to light, for example by periodically opening the table extensions that are stored inside the structure, or by moving any object placed on the surface, such as vases and accessories.

These tips are cleaning recommendations and do not guarantee complete stain removal.

We recommend that you always test the cleaning method on a hidden part of the item to check the resistance of the color.

Colour samples are to be considered approximate for each product. Slight color differences between a lot and the other are to be considered normal.

## Materials Certifications

### Veneered flamed walnut

Veneered woods are the result of a process of gluing extremely thin sheets of wood applied to various types of supports to produce furnishing elements, which have a similar appearance to solid wood, but with better performance in terms of resistance to woodworms, lightness and greater stability over time.

If exposed to light, and in any case with the passage of time, the color of the veneer changes. It may happen that furniture of the same color purchased after some time, show color differences. Upon request, the veneered parts can be supplied with certified origin from forests managed in a correct and responsible manner, according to the rigorous environmental standards established by the FSC circuit.

#### CLEANING AND MAINTENANCE

For ordinary cleaning of veneered woods, use a cloth moistened with neutral soap well diluted in water or specific products. Always dry after each application with a dry cloth or paper towel. Do not use abrasive products. In case of accidental spills of substances or liquids, immediately dab the wood with paper towel or with a dry and clean cloth. Avoid proximity to heat sources. Evenly expose the veneered woods to light, for example by periodically opening the table extensions that are stored inside the structure, or by moving any object placed on the surface, such as vases and accessories.

These tips are cleaning recommendations and do not guarantee complete stain removal.

We recommend that you always test the cleaning method on a hidden part of the item to check the resistance of the color.

Colour samples are to be considered approximate for each product. Slight color differences between a lot and the other are to be considered normal.

## Materials Certifications

### Glossy white calacatta ceramic

Ceramic tops give life to an extremely resistant top, suitable for placement in highly used environments. The properties that the ceramic tops include are high water repellency, heat resistance, scratch resistance and high durability.

#### CLEANING AND MAINTENANCE

For daily cleaning we recommend using a microfiber cloth, moistened with hot water and possibly neutral detergents, making sure to rinse them in case of use. Do not use abrasive scourers or cleaners. To remove any dried residues deposited on the surface, proceed with the use of a wooden or plastic scraper. Some types of stains, if not promptly removed, could leave a more or less visible permanent ring. In case of contact with acidic liquids (such as pure lemon juice) or highly pigmented liquids (such as red wine, coffee, Coke) remove promptly and rinse with a damp and clean cloth. The persistence of the stain over time hinders its complete removal. It is possible to use bleach to remove the most stubborn stains: with a damp cloth rub the surface for a few seconds. Most of the stains will no longer be visible within 2-3 minutes of application, then rinse with water and dry.

These tips are cleaning recommendations and do not guarantee complete stain removal.

We recommend that you always test the cleaning method on a hidden part of the item to check the resistance of the material.

Colour samples are to be considered approximate for each product. Slight color differences between a lot and the other are to be considered normal.

## Materials Certifications

### Noir desir glossy marble ceramic

Ceramic tops give life to an extremely resistant top, suitable for placement in highly used environments. The properties that the ceramic tops include are high water repellency, heat resistance, scratch resistance and high durability.

#### CLEANING AND MAINTENANCE

For daily cleaning we recommend using a microfiber cloth, moistened with hot water and possibly neutral detergents, making sure to rinse them in case of use. Do not use abrasive scourers or cleaners. To remove any dried residues deposited on the surface, proceed with the use of a wooden or plastic scraper. Some types of stains, if not promptly removed, could leave a more or less visible permanent ring. In case of contact with acidic liquids (such as pure lemon juice) or highly pigmented liquids (such as red wine, coffee, Coke) remove promptly and rinse with a damp and clean cloth. The persistence of the stain over time hinders its complete removal. It is possible to use bleach to remove the most stubborn stains: with a damp cloth rub the surface for a few seconds. Most of the stains will no longer be visible within 2-3 minutes of application, then rinse with water and dry.

These tips are cleaning recommendations and do not guarantee complete stain removal.

We recommend that you always test the cleaning method on a hidden part of the item to check the resistance of the material.

Colour samples are to be considered approximate for each product. Slight color differences between a lot and the other are to be considered normal.