



# Lea madia H73 Sideboard

design Paolo Vernier, 2019



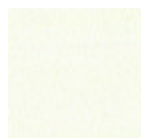
Lea sideboard, storage unit for living area with swing doors in wood or covered in fabric, faux leather or leather. Top in ceramic.

Lea sideboard is available in two versions: with a height of 55 cm or 73 cm. The 55 cm version features an open shelf in glass.

Supported by the conical feet that maintain the line of the collection, the Lea sideboard is characterized by the extreme lightness of the shapes and the soft design. The coatings of the doors embrace the choice of elegant fabrics or traditional materials making it versatile and original to furnish contemporary environments with continuity.

## Colors and Materials

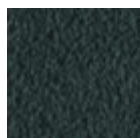
### Structure



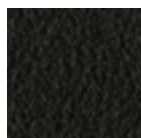
White steel



Sand steel



Grafite metal



Brown steel



Black steel



Black Nickel

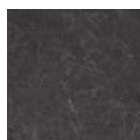
### Coating



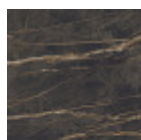
Laquered MDF  
5 Colors



Glossy white  
calacatta ceramic

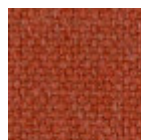


Glossy greek  
marble ceramic

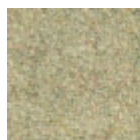


Noir desir glossy  
marble ceramic

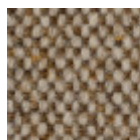
### Extensions



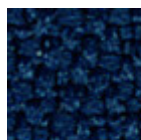
Cotton Club fabric  
14 Colors



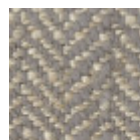
Fenix Wool fabric  
16 Colors



Main Line Flax fabric  
16 Colors



Mirage fabric  
15 Colors



Second fabric  
11 Colors



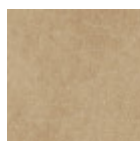
Visual fabric  
13 Colors



Velvet Superb  
15 Colors



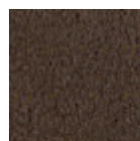
Secret faux leather  
23 Colors



Vintage faux leather  
12 Colors



Fiore leather  
21 Colors



Vintage leather  
8 Colors



Tessuto Oceanic  
13 Colors



**Manhattan fabric**

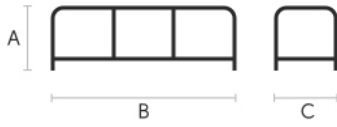
13 Colors



**Yoredale fabric**

14 Colors

## Dimensions



	A (cm) (inch)	B (cm) (inch)	C (cm) (inch)
<b>Lea H73</b> (cm) (inch)	73 28.7	210 82.7	48 18.9
<b>Lea H55</b> (cm) (inch)	55 21.7	180 70.9	40 15.7

## Volumetric Details

**Weight** 90 Kg

**Volume** 1.52 mc

**Package** 2

## Downloads

[.3ds Lea madia h73 \(zip\)](https://www.midj.com/images/uploads/resources/3d-midj-lea-madia-h73-3ds.zip) - <https://www.midj.com/images/uploads/resources/3d-midj-lea-madia-h73-3ds.zip>

[.dae Lea madia h73 \(zip\)](https://www.midj.com/images/uploads/resources/3d-midj-lea-madia-h73-dae.zip) - <https://www.midj.com/images/uploads/resources/3d-midj-lea-madia-h73-dae.zip>

[.dxf Lea madia h73 \(zip\)](https://www.midj.com/images/uploads/resources/3d-midj-lea-madia-h73-dxf.zip) - <https://www.midj.com/images/uploads/resources/3d-midj-lea-madia-h73-dxf.zip>

[.obj Lea madia h73 \(zip\)](https://www.midj.com/images/uploads/resources/3d-midj-lea-madia-h73-obj.zip) - <https://www.midj.com/images/uploads/resources/3d-midj-lea-madia-h73-obj.zip>

[.stl Lea madia h73 \(zip\)](https://www.midj.com/images/uploads/resources/3d-midj-lea-madia-h73-stl.zip) - <https://www.midj.com/images/uploads/resources/3d-midj-lea-madia-h73-stl.zip>

## Materials Certifications

### Glossy white calacatta ceramic

Ceramic tops give life to an extremely resistant top, suitable for placement in highly used environments. The properties that the ceramic tops include are high water repellency, heat resistance, scratch resistance and high durability.

#### CLEANING AND MAINTENANCE

For daily cleaning we recommend using a microfiber cloth, moistened with hot water and possibly neutral detergents, making sure to rinse them in case of use. Do not use abrasive scourers or cleaners. To remove any dried residues deposited on the surface, proceed with the use of a wooden or plastic scraper. Some types of stains, if not promptly removed, could leave a more or less visible permanent ring. In case of contact with acidic liquids (such as pure lemon juice) or highly pigmented liquids (such as red wine, coffee, Coke) remove promptly and rinse with a damp and clean cloth. The persistence of the stain over time hinders its complete removal. It is possible to use bleach to remove the most stubborn stains: with a damp cloth rub the surface for a few seconds. Most of the stains will no longer be visible within 2-3 minutes of application, then rinse with water and dry.

These tips are cleaning recommendations and do not guarantee complete stain removal.

We recommend that you always test the cleaning method on a hidden part of the item to check the resistance of the material.

Colour samples are to be considered approximate for each product. Slight color differences between a lot and the other are to be considered normal.

## Materials Certifications

### Noir desir glossy marble ceramic

Ceramic tops give life to an extremely resistant top, suitable for placement in highly used environments. The properties that the ceramic tops include are high water repellency, heat resistance, scratch resistance and high durability.

#### CLEANING AND MAINTENANCE

For daily cleaning we recommend using a microfiber cloth, moistened with hot water and possibly neutral detergents, making sure to rinse them in case of use. Do not use abrasive scourers or cleaners. To remove any dried residues deposited on the surface, proceed with the use of a wooden or plastic scraper. Some types of stains, if not promptly removed, could leave a more or less visible permanent ring. In case of contact with acidic liquids (such as pure lemon juice) or highly pigmented liquids (such as red wine, coffee, Coke) remove promptly and rinse with a damp and clean cloth. The persistence of the stain over time hinders its complete removal. It is possible to use bleach to remove the most stubborn stains: with a damp cloth rub the surface for a few seconds. Most of the stains will no longer be visible within 2-3 minutes of application, then rinse with water and dry.

These tips are cleaning recommendations and do not guarantee complete stain removal.

We recommend that you always test the cleaning method on a hidden part of the item to check the resistance of the material.

Colour samples are to be considered approximate for each product. Slight color differences between a lot and the other are to be considered normal.