

# LORETTA POUF

*E. Gallina*

2016



# LORETTA POUF

E. Gallina

2016

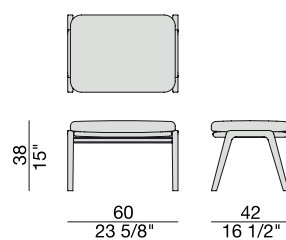
Pouf con struttura in massello di frassino e rivestimento nei tessuti della collezione.

*Stool with frame in solid ash wood and cover in the fabrics of the collection.*

*Pouf mit Gestell aus massiver Esche und Bezug in den Stoffen der Kollektion.*

*Pouf avec structure en frêne massif et revêtement dans les tissus de la collection.*

*Pouf con estructura en fresno macizo y revestimiento en las telas de la colección.*



# LORETTA POUF

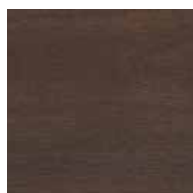
E. Gallina

2016

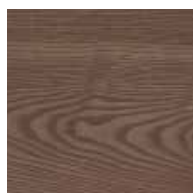
## ESSENZE | *Essences*



**Frassino Naturale**  
Natural Ash



**Frassino**  
Ash  
*tinto/stained moka*



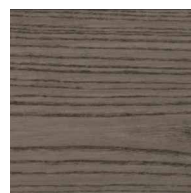
**Frassino**  
Ash  
*tinto noce canaletta  
canaletta walnut stained*



**Frassino**  
Ash  
*tinto/stained wengé*

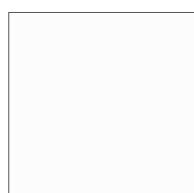


**Frassino**  
Ash  
*tinto/stained canapa*



**Frassino**  
Ash  
*tinto/stained caffè*

## LACCATO OPACO PORO APERTO | *Matt lacquered open pore*



**Bianco**  
White  
(RAL 9016)



**Avorio**  
Ivory  
(RAL 1013)



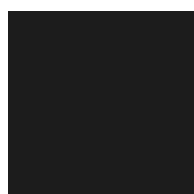
**Argilla**  
Mud  
(RAL 7006)



**Piombo**  
Lead  
(NCS S5005G20Y)



**Cioccolato**  
Chocolate  
(RAL 8019)



**Nero**  
Black  
(RAL 9005)



**Granata**  
Garnet red  
(NCS S4050Y90R)



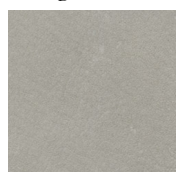
**Pistacchio**  
Pistachio green  
(PANTONE 5825)



**Avio**  
Aviation blue  
(PANTONE 5415)

## PELLE | *Leather*

**Categoria LUX**



Nabuk

**Categoria PLUS**



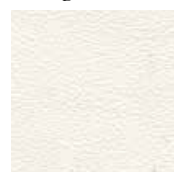
Pelle PLUS

**Categoria PELLE**



Pelle

**Categoria EXTRA**



Pelle EXTRA

# LORETTA POUF

E. Gallina

2016

## RIVESTIMENTO | *Cover*

### *Categoria A*



Hallingdal 65

### *Categoria B*



Rabat



Milord

### *Categoria C*



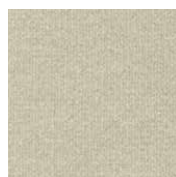
Fashion



Moran



Thalys



Velvet



Wool



Flax



Armam



Ikat

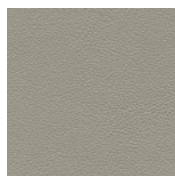


Loom

### *Categoria D*



Astra



Ecopelle

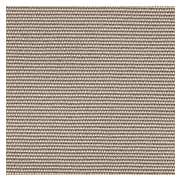


Range



Tress

### *Categoria E*



Cotone



Dorian



In Bianco/Calico

### *Categoria COM*

Disponibile con tessuto fornito dal cliente.

Available with fabric supplied by the customer.

Verfügbar mit Kundenstoff.

Disponibile avec tissu du client.

Disponibile con tela suministrada por el cliente.