





Millennium Drive

Designer: Christophe Pillet
Year: 2008

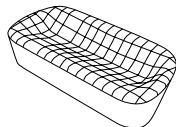
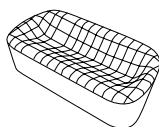
Theatrical in its visual impact yet minimalist in design, Millennium Drive holds the body in a soft and ergonomic embrace and defines space with its original design, played out on the contrast between the quilted seating and the plain base with removable covers for convenience in comfort.

Developed by Tacchini in Italy

Dimensions (cm)

Cod. OMIL208

Cod. OLABP80



W 208 D 84 cm
H 70 H seat 42 cm

W 248 D 84 cm
H 70 H seat 42 cm

Removable covers

CAD Files:
3D (.dwg, .3ds)
2D (.dwg)

Download CAD
files at [tacchini.it/
en/downloads](http://tacchini.it/en/downloads)

Materials description

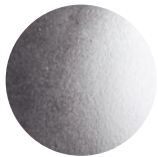
Internal frame: birch plywood 18 mm with elastic belts + PST shock absorbent on the arms.

Padding: differentiated - density polyurethane foam.

Base: die-cast aluminium feet.

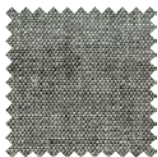
Upholstery: fully removable quilted cover.

Chromed base



T23
Polished Chromed

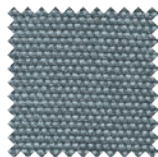
Suggested upholsteries



Eucharis



Lars



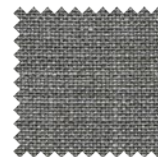
Lunaria



Silene

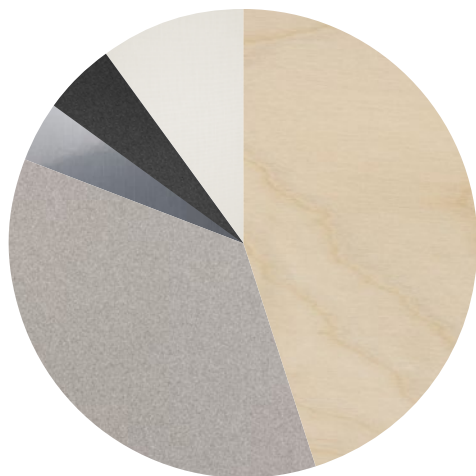


Divina



Thesium

Materials informations



Birch Plywood	45%
Polyurethane	36%
Upholstery	10%
Elastic belts	5%
Die-cast aluminium	4%

Polyurethane

Flexible expanded polyurethane is a solid elastic polymeric material with open cell structure. It is a non-toxic material and above all free from ozone-damaging components. Production and processing of the polyurethane we use meet the objectives of the new policy of ensuring the protection of human health and of the environment. We focus in particular on the choice and use of the types of density of polyurethane suitable for preserving over the years the features of load capacity, elasticity and resilience. For products used in public spaces flame-retardant expanded polyurethane is chosen, tested and certified according to international regulations.

Elastic belts

The elastic belt used on the seats of our upholstered products is a component to be chosen with care in order to ensure adequate elasticity and springing for the dimension and the structure of the product. We use plaited elastic webbing to add greater comfort and resistance to weight stresses.

Metal

The need to combine complex yet lightweight shapes with resistant materials necessarily involves the use of metals such as steel and aluminium. Products in polyurethane foam are made with an inner steel frame for adding strength to the structure. The bases are in tubular metal which can be chromed with a gloss or satin finish or painted with epoxy powders.

Wood

Wood is a renewable raw material. All products derived from wood, such as for example plywood, have the advantage of being able to be machined more easily than wood and do not deform. The timber we use – solid or plywood – comes mainly from European and Russian forests and is seasoned to specific values of humidity with tests. Most of the structures of the products in the collection have a frame in solid pine or ash, or in beech or poplar plywood.

Recyclability

All Millennium Drive elements are 100% recyclable when fully separated. Tacchini undertakes on-going research and development, with efforts made to introduce products which are a perfect combination of function and safety without jeopardizing the final design of the same articles. During production attempts are made to minimize noise and emission levels and to reduce rejects as far as possible. All the single materials which make up the production process, once disassembled, can be reused several times, maintaining a high quality standard.

Packaging

Millennium Drive element is dispatched already assembled. It is protected by tissue paper and cellophane to protect the covering from dust and direct contact with the cardboard. The product is packed in rigid cardboard boxes suitable for world export. Manufacture of the packaging observes the criteria for recovery both as recycling and energy recovery and composting.

Once a product reaches the end of its life cycle it has to be eliminated.

To discover more about Tacchini environmental policy please visit: www.tacchini.it



Christophe Pillet

This lodestar in French design gained a Master's degree in Design in Milan in 1985, before working with Philip Starck in Paris from 1988 to 1993, after which he set up his own independent, eclectic business, featuring his hallmark style – simple, strong, and to the point – be it in architecture or interior design, furniture, fashion or industrial design. Winner of the French “Créateur de l'année” award in 1994, Pillet works with some of the biggest names in contemporary furniture design.

Other products by Christophe Pillet:
Mayfair, Mayfair Chair, Memory Lane,
Millennium Drive, SouthBeach