

# MIDJ



## Nenè rectangular Table

design Paolo Vernier, 2013

Nenè rectangular table with four leg base in lacquered metal.

Melamine top.

### Colors and Materials

#### Structure



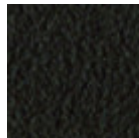
White steel



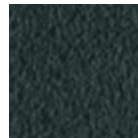
Black steel



Sand steel



Brown steel



Grafite metal

#### Coating



Melamine

8 Colors

### Dimensions



	cm	inch
A	75	29.5
B	140	55.1
C	90	35.4

### Volumetric Details

Weight 32 Kg

Volume 0.29 mc

Package 3

### Downloads

3D Nenè 140x90 (zip) - <https://www.midj.com/images/uploads/resources/nene-140x90-3d.zip>