

# NOEMI

Marelli & Molteni

2012



porada

# NOEMI

Marelli & Molteni

2012

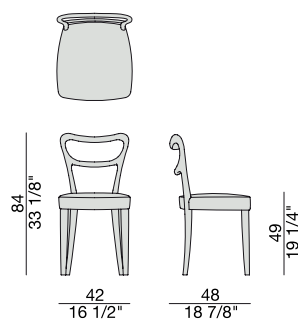
Sedia con struttura in massello di noce canaletta e rivestimento nei tessuti della collezione.

*Chair with frame in solid canaletta walnut and cover in the fabrics of the collection.*

*Stuhl mit Gestell aus massivem Nussbaum Canaletta und Bezug in den Stoffen der Kollektion.*

*Chaise avec structure en noyer canaletta massif et revêtement dans les tissus de la collection.*

*Silla con estructura en nogal canaletta macizo y revestimiento en las telas de la colección.*



## ESSENZE | *Essences*



**Noce Canaletta**  
Canaletta Walnut

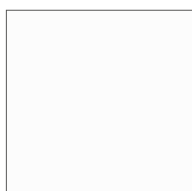


**Noce Canaletta**  
Canaletta Walnut  
*tinto/stained moka*

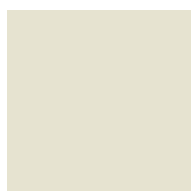


**Noce Canaletta**  
Canaletta Walnut  
*tinto/stained wengé*

## LACCATO OPACO PORO CHIUSO | *Matt lacquered closed pore*



**Bianco**  
White  
(RAL 9016)



**Avorio**  
Ivory  
(RAL 1013)



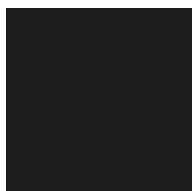
**Argilla**  
Mud  
(RAL 7006)



**Piombo**  
Lead  
(NCS S5005G20Y)



**Cioccolato**  
Chocolate  
(RAL 8019)



**Nero**  
Black  
(RAL 9005)



**Granata**  
Garnet red  
(NCS S4050Y90R)



**Pistacchio**  
Pistachio green  
(PANTONE 5825)



**Avio**  
Aviation blue  
(PANTONE 5415)

## PELLE | *Leather*

### *Categoria LUX*



Nabuk

### *Categoria PLUS*



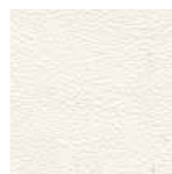
Pelle PLUS

### *Categoria PELLE*



Pelle

### *Categoria EXTRA*



Pelle EXTRA

## RIVESTIMENTO | *Cover*

### *Categoria A*



Hallingdal 65

### *Categoria B*



Rabat



Milord

### *Categoria C*



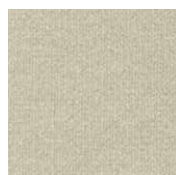
Fashion



Moran



Thalys



Velvet



Wool



Flax



Armam



Ikat

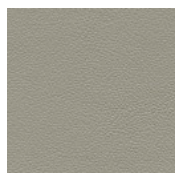


Loom

### *Categoria D*



Astra



Ecopelle

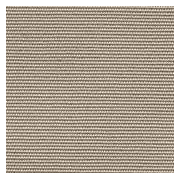


Range



Tress

### *Categoria E*



Cotone



Dorian



In Bianco/Calico

### *Categoria COM*

Disponibile con tessuto fornito dal cliente.

*Available with fabric supplied by the customer.*

Verfügbar mit Kundenstoff.

*Disponible avec tissu du client.*

Disponibile con tela suministrada por el cliente.