

# OLO

Francesco Rota | 2013



# OLO

Francesco Rota | 2013

It is a pleasure to remove any sharpness, even where there is a fold in the design, since softness always wins. The stackable OLO chair, round and generous right from the vowel sounds of its name, offers extreme comfort and sturdiness in the large dimensions of the seat and the rounded shape of the backrest. It recalls a look of the 1950s, elegant timeless design.

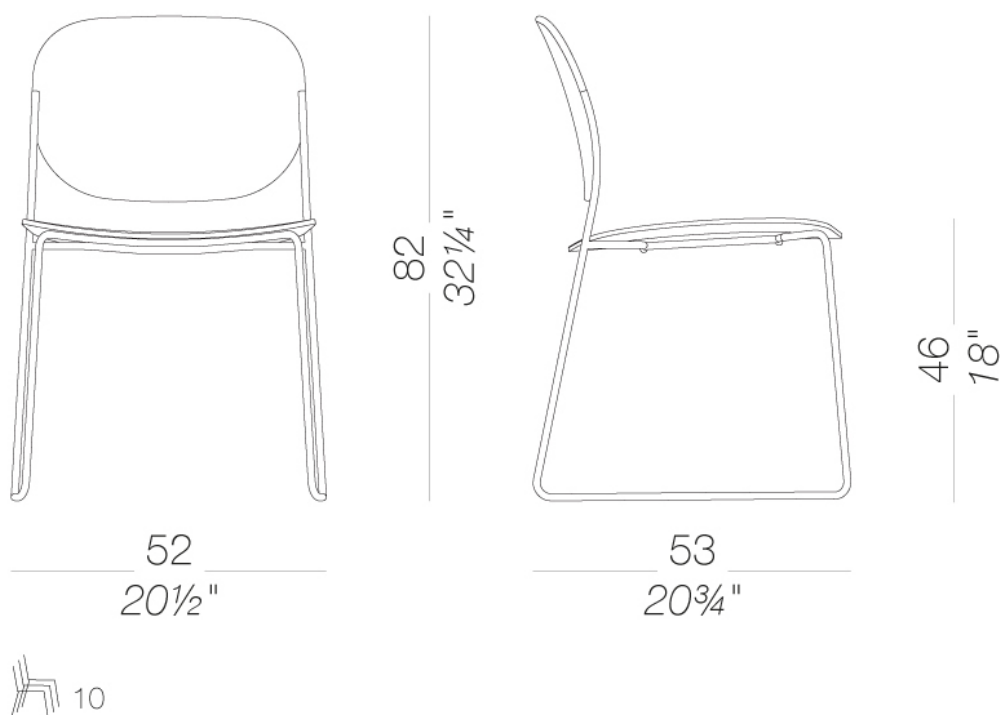


# OLO

Francesco Rota | 2013

## S170 Stackable with slide-frame base

Stackable chair on a sledge metal base mat chromed or powder coated. Seat and backrest in curved plywood in several finishes and colours.



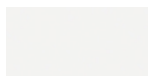
# OLO

Francesco Rota | 2013

## frame



powder coating  
black  
1 Colors



powder coating  
white  
1 Colors

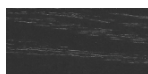


metal  
mat chromed  
1 Colors

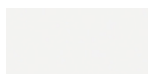
## seat/back



wood  
blanched oak  
1 Colors



wood  
black open pore  
1 Colors



lacquered  
white lacquered  
1 Colors

**consult the portfolio for the range of colors, fabrics, eco-leather, soft-leather.**

### use and maintenance instructions

Clean all parts in wood, leather, fabric and metal with a damp cloth or a diluted neutral cleaner. Do not use cleaners with alcohol, bleach, solvent or abrasive products. Any liquid spilt on the product must be wiped up immediately. When lifting or moving the product, hold it on the structure and not under the seat. The product should not be subjected to unbalanced weights, as it is designed for a proper rest on the foothold (on four legs or on the base). Our company relieves from any responsibility in case of damage caused to fragile floors. Avoid any improper use of the product: do not step on the product, on the footrest or on the armrests. Avoid any movements that could compromise the proper functionality of the product or the safety of the users. Wood and leather, being natural materials, could be easily damaged. Small impurities or imperfections are within quality standard range. Do not expose the product to weather conditions or atmospheric agents, nor to heat sources over 40°C. Also products for outdoor use could be afflicted by atmospheric agents. The product could undergo possible exterior changes due to particular exposure to heat, humidity and saltiness. An appropriate and frequent maintenance and cleaning of the product enhances its durability. The product could change colour and shade, if exposed to direct sunlight. Maintenance has to be carried out by experienced staff. Dispose of the package only after assembling the product, in order to avoid the loss of ironmongery and components. Once the product has been dismantled, the product itself or its components must be given to the public garbage disposal system, according to the legislation in force.