

design — Gabriele e Oscar Buratti



OTX, 887/TQ
tavolo \ table

Versatili e dal design essenziale i tavoli OTX con gamba centrale e quattro piedini, sono caratterizzati da un piano reclinabile verticalmente in HPL, tondo o quadrato in tre dimensioni differenti, per poterli accostare uno accanto all'altro. Estremamente funzionali, sono inoltre proposti in tre altezze per diversi utilizzi: da spazi collettivi a bar, da giardini a terrazze. È inoltre proposto nella versione dining Ø128 e Ø158cm, con base in metallo verniciata e piano sempre in HPL.

Versatile and with an essential design, the OTX tables with a central leg and four feet are characterized by a vertically reclining top in HPL, round or square in 3 different sizes, that makes them placeable side by side. Extremely functional, they are also offered in three heights for different uses from collective spaces to bars, from gardens to terraces. It is also proposed in the dining version, Ø128 and Ø158cm, with a painted metal base and HPL top.

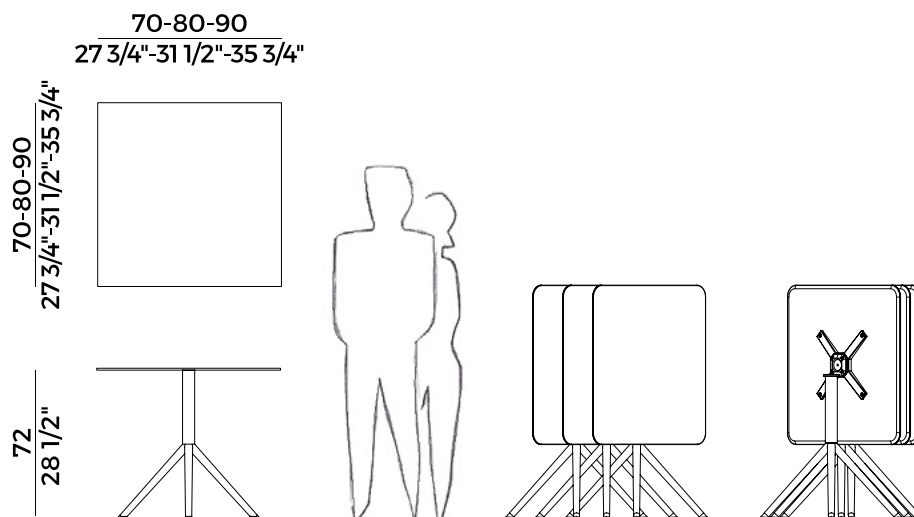
Informazioni tecniche \ *Technical information*

Descrizione tecnica \ *Technical description*

Tavolo con piano reclinabile, disponibile in tre dimensioni, con piano quadrato. Base in metallo verniciato. Piano in HPL.

Table with folding top, available in three sizes, with square top. Base in painted metal. Top in HPL.

Dimensioni \ *Dimensions*



70x70

HPL - 2 crt = m³ **0.34**

HPL gross weight - Kg **26,1**



80x80

HPL - 2 crt = m³ **0.36**

HPL gross weight - Kg **32,5**



90x90

HPL - 2 crt = m³ **0.40**

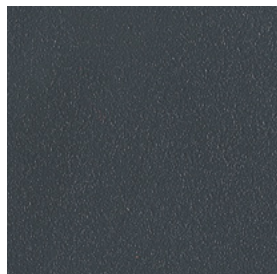
HPL gross weight - Kg **25**

Finiture \ *Finishes*

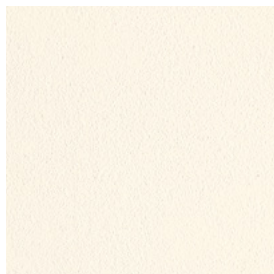
Finiture base \

Base finishes

Metallo \ *Metal*



Verniciato Antracite Goffrato \
Anthracite Embossed Lacquered



Verniciato Bianco Goffrato \
White Embossed Lacquered

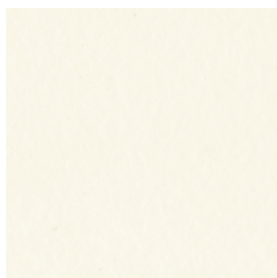


Verniciato Aval Goffrato \
Aval Embossed Lacquered

Finiture piano \

Top finishes

HPL \ *HPL*



Bianco \
White



Antracite \
Anthracite

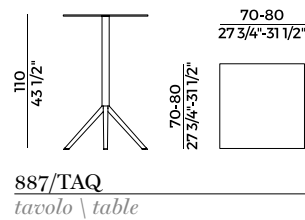
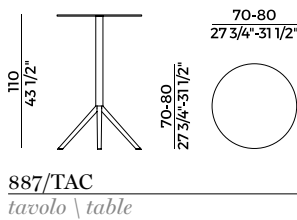
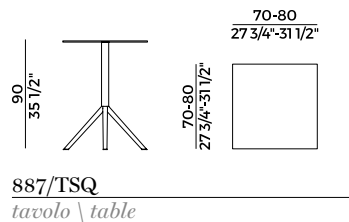
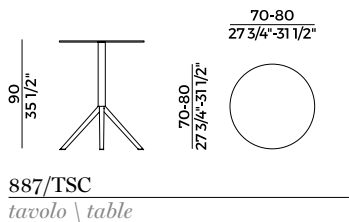
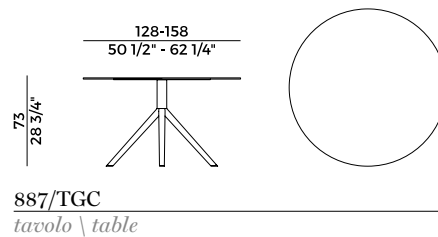
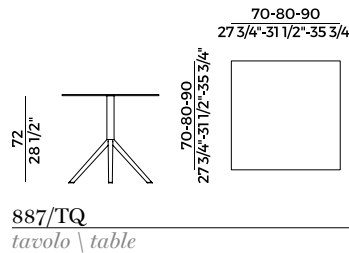
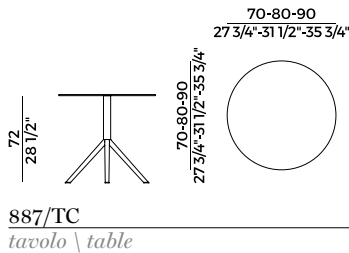


Orchidea \
Orchid

**Collezione outdoor OTX **
OTX outdoor collection

Famiglia di tavoli disponibili nelle versioni:
 - tavoli con piano reclinabile, disponibili in tre altezze e tre dimensioni, con piano tondo o quadrato;
 - tavolo con piano circolare in due dimensioni;
 Base in metallo verniciato. Piano in HPL.

*Set of tables available in the following versions:
 - tables with folding top, available in three heights and three sizes, with round or square top;
 - table with round top available in two sizes;
 Base in painted metal. Top in HPL.*



design — Gabriele e Oscar Buratti



OTX, 887/TSQ
tavolo \ table

Versatili e dal design essenziale i tavoli OTX con gamba centrale e quattro piedini, sono caratterizzati da un piano reclinabile verticalmente in HPL, tondo o quadrato in tre dimensioni differenti, per poterli accostare uno accanto all'altro. Estremamente funzionali, sono inoltre proposti in tre altezze per diversi utilizzi: da spazi collettivi a bar, da giardini a terrazze. È inoltre proposto nella versione dining Ø128 e Ø158cm, con base in metallo verniciata e piano sempre in HPL.

Versatile and with an essential design, the OTX tables with a central leg and four feet are characterized by a vertically reclining top in HPL, round or square in 3 different sizes, that makes them placeable side by side. Extremely functional, they are also offered in three heights for different uses from collective spaces to bars, from gardens to terraces. It is also proposed in the dining version, Ø128 and Ø158cm, with a painted metal base and HPL top.

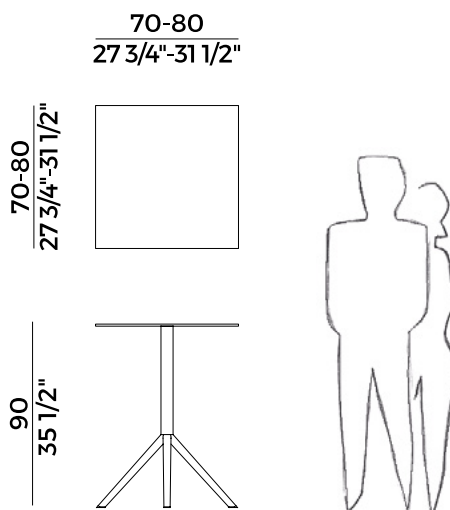
Informazioni tecniche \ *Technical information*

Descrizione tecnica \ *Technical description*

Tavolo con piano reclinabile, disponibile in due dimensioni, con piano quadrato. Base in metallo verniciato. Piano in HPL.

Table with folding top, available in two sizes, with square top. Base in painted metal. Top in HPL.

Dimensioni \ *Dimensions*

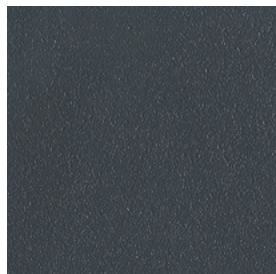


Finiture \ *Finishes*

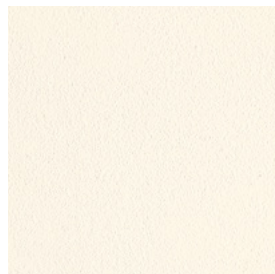
Finiture base \

Base finishes

Metallo \ *Metal*



Verniciato Antracite Goffrato \
Anthracite Embossed Lacquered



Verniciato Bianco Goffrato \
White Embossed Lacquered

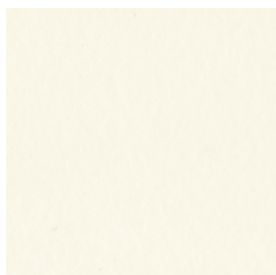


Verniciato Aval Goffrato \
Aval Embossed Lacquered

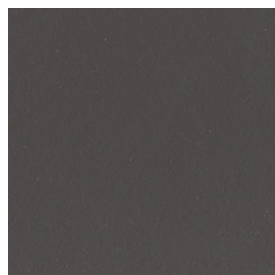
Finiture piano \

Top finishes

HPL \ *HPL*



Bianco \
White



Antracite \
Anthracite

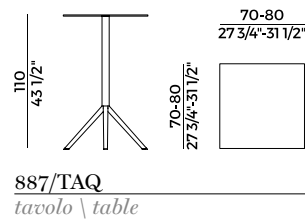
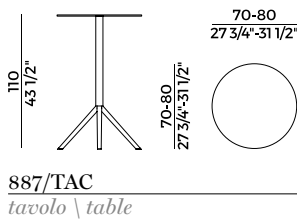
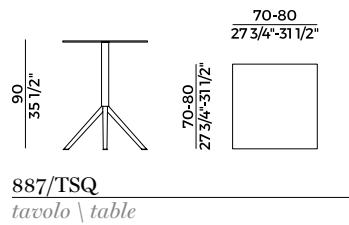
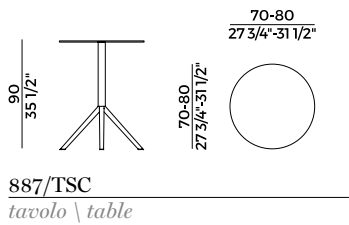
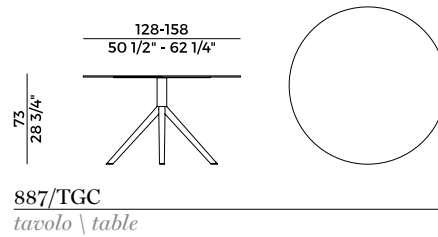
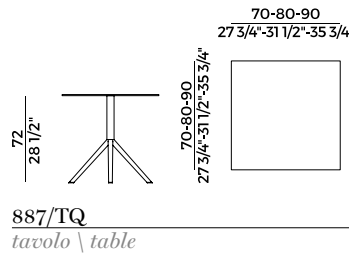
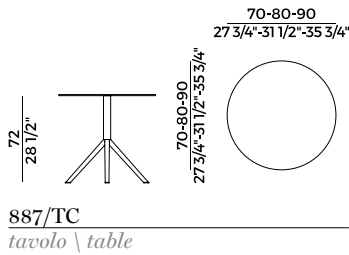


Orchidea \
Orchid

**Collezione outdoor OTX **
OTX outdoor collection

Famiglia di tavoli disponibili nelle versioni:
 - tavoli con piano reclinabile, disponibili in tre altezze e tre dimensioni, con piano tondo o quadrato;
 - tavolo con piano circolare in due dimensioni;
 Base in metallo verniciato. Piano in HPL.

*Set of tables available in the following versions:
 - tables with folding top, available in three heights and three sizes, with round or square top;
 - table with round top available in two sizes;
 Base in painted metal. Top in HPL.*



design — Gabriele e Oscar Buratti



OTX, 887/TAQ
tavolo \ table

Versatili e dal design essenziale i tavoli OTX con gamba centrale e quattro piedini, sono caratterizzati da un piano reclinabile verticalmente in HPL, tondo o quadrato in tre dimensioni differenti, per poterli accostare uno accanto all'altro. Estremamente funzionali, sono inoltre proposti in tre altezze per diversi utilizzi: da spazi collettivi a bar, da giardini a terrazze. È inoltre proposto nella versione dining Ø128 e Ø158cm, con base in metallo verniciata e piano sempre in HPL.

Versatile and with an essential design, the OTX tables with a central leg and four feet are characterized by a vertically reclining top in HPL, round or square in 3 different sizes, that makes them placeable side by side. Extremely functional, they are also offered in three heights for different uses from collective spaces to bars, from gardens to terraces. It is also proposed in the dining version, Ø128 and Ø158cm, with a painted metal base and HPL top.

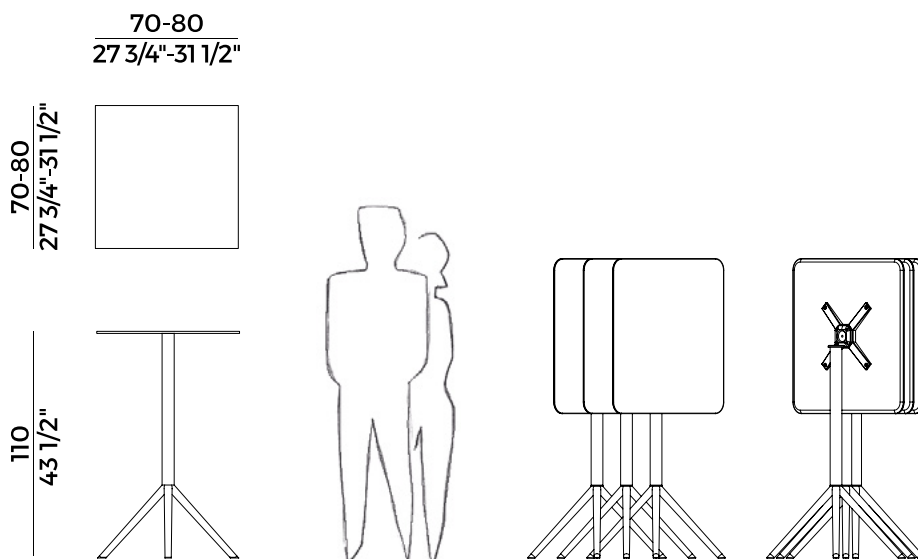
Informazioni tecniche \ *Technical information*


Descrizione tecnica \ *Technical description*


Tavolo alto con piano reclinabile, disponibile in tre dimensioni, con piano quadrato.
Base in metallo verniciato. Piano in HPL.

*High table with folding top, available in three sizes, with square top.
Base in painted metal. Top in HPL.*

Dimensioni \ *Dimensions*



	70x70
HPL - 2 crt = m ³ 0.40	
HPL gross weight - Kg 27,2	

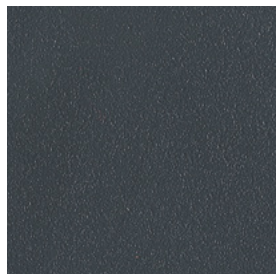
	80x80
HPL - 2 crt = m ³ 0.42	
HPL gross weight - Kg 33,6	

Finiture \ *Finishes*

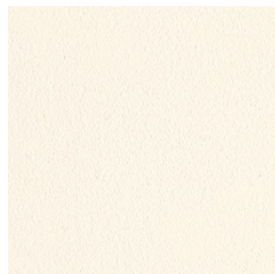
Finiture base \

Base finishes

Metallo \ *Metal*



Verniciato Antracite Goffrato \
Anthracite Embossed Lacquered



Verniciato Bianco Goffrato \
White Embossed Lacquered

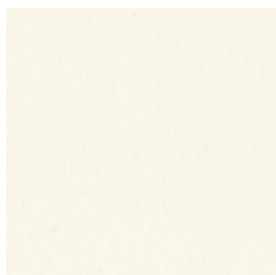


Verniciato Aval Goffrato \
Aval Embossed Lacquered

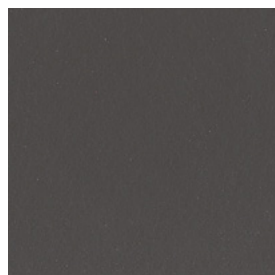
Finiture piano \

Top finishes

HPL \ *HPL*



Bianco \
White



Antracite \
Anthracite



Orchidea \
Orchid

**Collezione outdoor OTX **
OTX outdoor collection

Famiglia di tavoli disponibili nelle versioni:
 - tavoli con piano reclinabile, disponibili in tre altezze e tre dimensioni, con piano tondo o quadrato;
 - tavolo con piano circolare in due dimensioni;
 Base in metallo verniciato. Piano in HPL.

*Set of tables available in the following versions:
 - tables with folding top, available in three heights and three sizes, with round or square top;
 - table with round top available in two sizes;
 Base in painted metal. Top in HPL.*

