

Pick Up

Designed by Pietro Arosio, 1999  
Cat. Chaises-longues

 Tacchini





## Pick Up

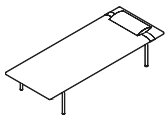
Designer: Pietro Arosio  
Year: 1999

Pick-up is a chaise longue that is also long on character. With its two internal joints, the ends can be raised or lowered, so that it can become a veritable day-bed, complete with removable pillow. A star feature for contract spaces dedicated to hospitality and wellbeing, it is accessorised with a storage pouch and magazine holder.

Developed by Tacchini in Italy

## Dimensions (cm)

Cod. OPI200

W 205 D 77 cm  
H 42 H seat 42 cm

## Removable covers

CAD Files:  
3D (.dwg, .3ds)  
2D (.dwg)Download CAD  
files at [tacchini.it/  
en/downloads](http://tacchini.it/en/downloads)

---

**Materials description**

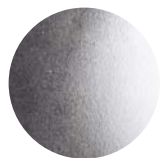
Internal frame: metal frame with releases to grant the movements on the head and footrests with elastic belts.

Padding: differentiated - density polyurethane foam. Headrest: feather.

Base: metal frame 44,5 × 37 cm in tubular steel Ø 35 mm.

Upholstery: fully removable cover.

---

**Base**

T23  
Polished Chromed

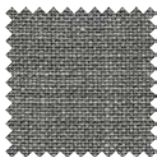
---

**Suggested upholsteries**

Dianella



Erika



Thesium



Leather



Super Leather



Divina

## Materials informations



Metal components	37%
Polyurethane foam	30%
Upholstery	18%
Aluminium feet	7%
Elastic belts	5%
Feather	3%

## Polyurethane

Flexible expanded polyurethane is a solid elastic polymeric material with open cell structure. It is a non-toxic material and above all free from ozone-damaging components. Production and processing of the polyurethane we use meet the objectives of the new policy of ensuring the protection of human health and of the environment. We focus in particular on the choice and use of the types of density of polyurethane suitable for preserving over the years the features of load capacity, elasticity and resilience. For products used in public spaces flame-retardant expanded polyurethane is chosen, tested and certified according to international regulations.

## Foam

Similar to polyurethane, foam is used for moulding products with special and organic shapes. It is a material which is highly resistant to ageing and flames. Its appearance at the edges is clean, compact. All products made with a foam structure offer a solution with extraordinary comfort.

## Metal

The need to combine complex yet lightweight shapes with resistant materials necessarily involves the use of metals such as steel and aluminium. Products in polyurethane foam are made with an inner steel frame for adding strength to the structure. The bases are in tubular metal which can be chromed with a gloss or satin finish or painted with epoxy powders.

## Elastic belts

The elastic belt used on the seats of our upholstered products is a component to be chosen with care in order to ensure adequate elasticity and springing for the dimension and the structure of the product. We use plaited elastic webbing to add greater comfort and resistance to weight stresses.

## Recyclability

All Pick Up elements are 100% recyclable when fully separated. Tacchini undertakes on-going research and development, with efforts made to introduce products which are a perfect combination of function and safety without jeopardizing the final design of the same articles. During production attempts are made to minimize noise and emission levels and to reduce rejects as far as possible. All the single materials which make up the production process, once disassembled, can be reused several times, maintaining a high quality standard.

## Packaging

Pick Up element is dispatched already assembled. It is protected by tissue paper and cellophane to protect the covering from dust and direct contact with the cardboard. The product is packed in rigid cardboard boxes suitable for world export. Manufacture of the packaging observes the criteria for recovery both as recycling and energy recovery and composting.

Once a product reaches the end of its life cycle it has to be eliminated.

To discover more about Tacchini environmental policy please visit: [www.tacchini.it](http://www.tacchini.it)





---

**Pietro Arosio**

Pietro Arosio was born in 1946 in Lissone, near Milan. He learnt his profession at the research centre of a company specialising in the production of metal furniture for communal spaces. This experience led to the emergence of a design philosophy that developed over time through his work as an industrial designer. He began his career in 1972, and was already winning accolades in 1983, receiving the Casaviva d'Oro award. The fundamentals of his work include essentiality, research into new materials and technologies, and attention to detail and to the engineering implications of his designs. Pietro Arosio is fully aware of the emotional impact his products can have, and has worked in partnership with various internationally-acclaimed artists, including Nespolo, Del Pezzo, Hsiao Chin, Tilson, Rotella and Keizo. A number of his pieces have been exhibited at the Victoria and Albert Museum in London, and at the Munich modern art museum Die Sammlung.

Other products by Pietro Arosio:  
Happy Hour, Intercity, Moon, Nastro, Parentesi, Quadro, Slalom, Sliding, XL.

---

**Tacchini Projects:**

Hotel Belvoir  
(Ruschlikon, Switzerland)



Ten Trinity Square Spa  
(London, Great Britain)