

# PORTAVALIGIE

Design Essetipi

## PORTAVALIGIE | LUGGAGE RACK

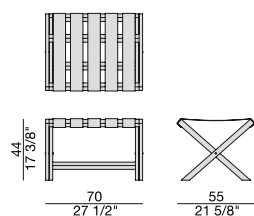
Portavaligie richiudibile in massello di frassino e cinghie in cuoietto.

Foldable luggage rack in solid ash and belts in cuoietto leather.

Gepäckträger aus massivem Esche und Leder zu öffnen.

Porte-bagages pliable en frêne massif et trame en cuoietto.

Maletero plegable en fresno macizo con cinchas de cuoietto.



# PORTAVALIGIE

Design Essetipi

## PORTAVALIGIE | LUGGAGE RACK

### EsSENze | Wood



FRASSINONATURALE  
Natural Ash



FRASSINO  
Ash  
*tinto/stained moka*



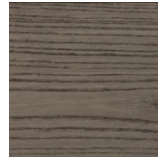
FRASSINO  
Ash  
*tinto/stained canaletta walnut*



FRASSINO  
Ash  
*tinto/stained wengé*

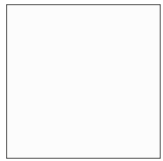


FRASSINO  
Ash  
*tinto/stained canapa*



FRASSINO  
Ash  
*tinto/stained caffè*

### Laccato opaco poro aperto | Matt Lacquered open pore



BIANCO  
White  
(RAL 9016)



AVORIO  
Ivory  
(RAL 1013)



ARGILLA  
Argilla  
(RAL 7006)



PIOMBO  
Piombo  
(NCS S5005G20Y)



NERO  
Black  
(RAL 9005)



GRANATA  
Granata  
(NCS S4050Y90R)



PISTACCHIO  
Pistacchio  
(PANTONE 5825)



AVIO  
Avio  
(PANTONE 5415)

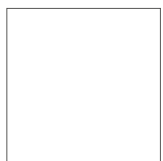


IRON  
Iron  
(RAL 7011)

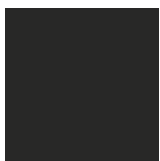


CIOCCOLATO  
Chocolate  
(RAL 8019)

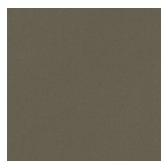
### Cuoietto | Cuoietto Leather



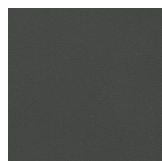
BIANCO  
White



NERO  
Black



FOCA  
Foca



GRIGIO SCURO  
Dark Grey



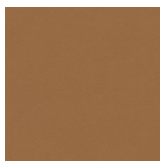
CORDA  
Corda



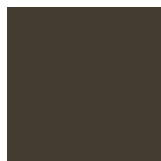
SABBIA  
Sabbia



NATURALE  
Natural



INVECCHIATO  
Invecchiato



TESTA DI MORO  
Testa di Moro



BULGARO  
Bulgaro Red